


Lower Seymour Conservation Reserve



Lower Seymour Conservation Reserve

- **History**
 - **2014 Activities**
 - **Site Restoration Plans for Capital Project Sites**
 - **Rockfall Seymour Canyon**
- 

Lower Seymour Conservation Reserve



History



Management Plan




Goals

1. Maintain area as a water reserve
2. Continue wildlife and forest research
3. Increase recreational and educational potential
4. Create land stewardship approach that builds on stakeholder involvement

- Plan approved 2002
- Life span of 25 years, 2027

Lower Seymour Conservation Reserve

- History
 - **2014 Activities**
 - Site Restoration Plans for Capital Project Sites
 - Rockfall Seymour Canyon
- 

2014 Activities

- TAP (Trail Adoption Program)
- Fisherman's Trail Upgrade
- Seymour River Estuary Enhancement Project
- LSCR Parking Lot
- Watershed Education Program
- Invasive Species Removal
- Learning Lodge



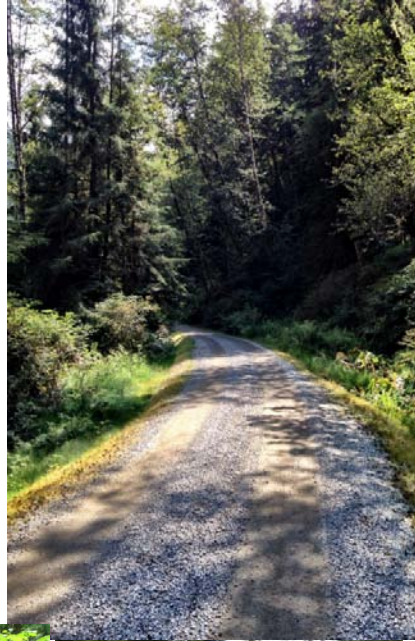
TAP- Trail Adoption Program

Trails Adopted

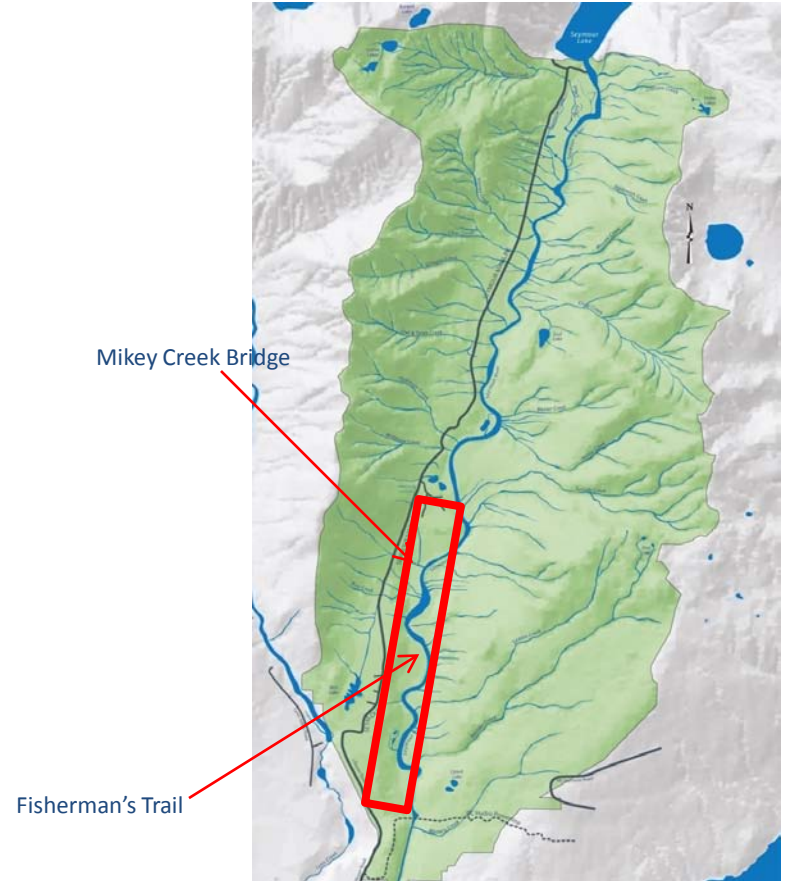
- Forever After
- TNT
- Dale's
- Circuit 8
- High School League Trail



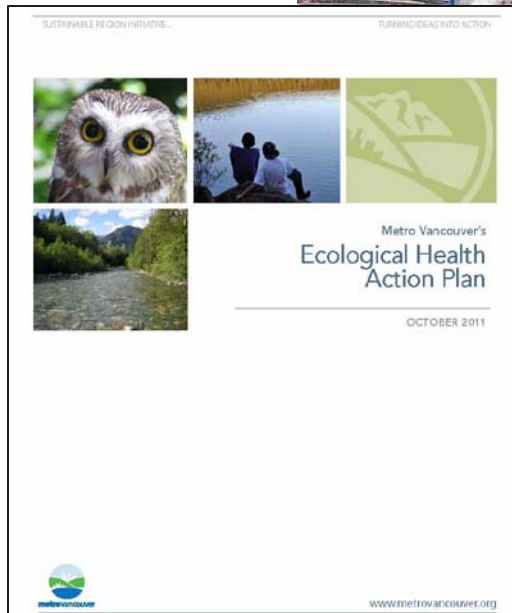
Fisherman's Trail Maintenance



Lower Seymour Conservation Reserve



Seymour Estuary Enhancement Project



Seymour Estuary Enhancement Project

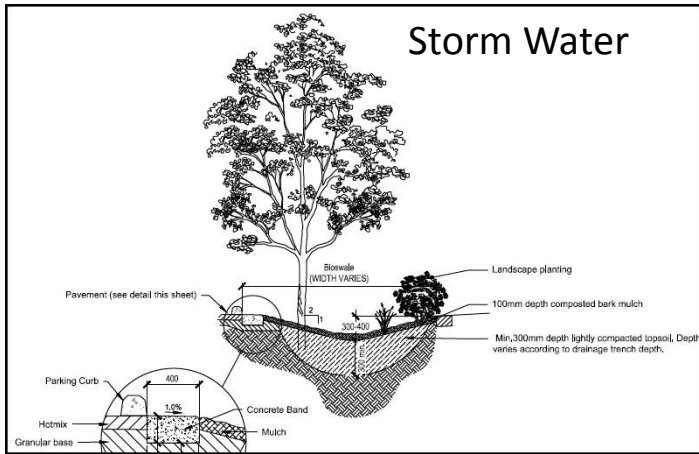


Seymour Estuary Enhancement Project

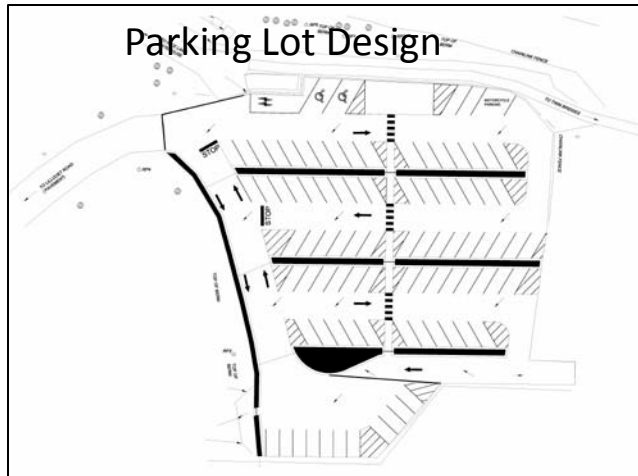


LSCR Public Parking Lot Paving

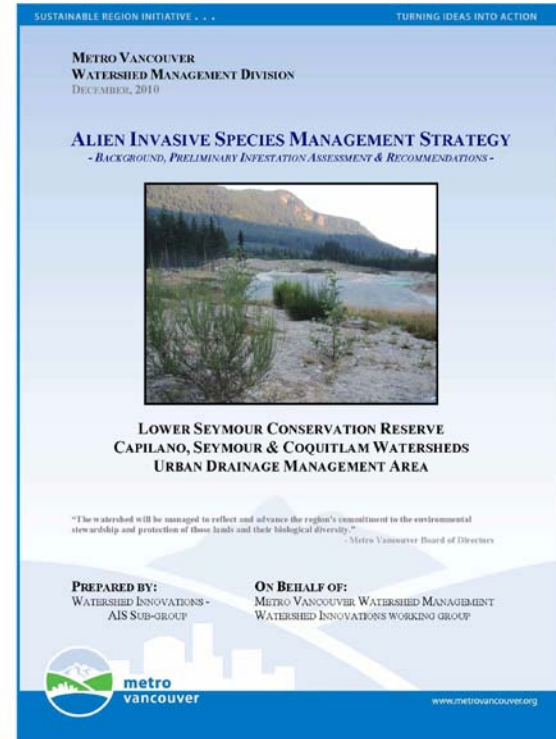
Lower Seymour Conservation Reserve



LSCR Public Parking Lot



Invasive Species Removal



Watershed Education Program



Learning Lodge

1994 movie set



Lower Seymour Conservation Reserve

- History
 - 2014 Activities
 - Site Restoration Plans for Capital Project Sites
 - Rockfall Seymour Canyon
- 

Restoration Sites

Km 4 Gravel Pit ●

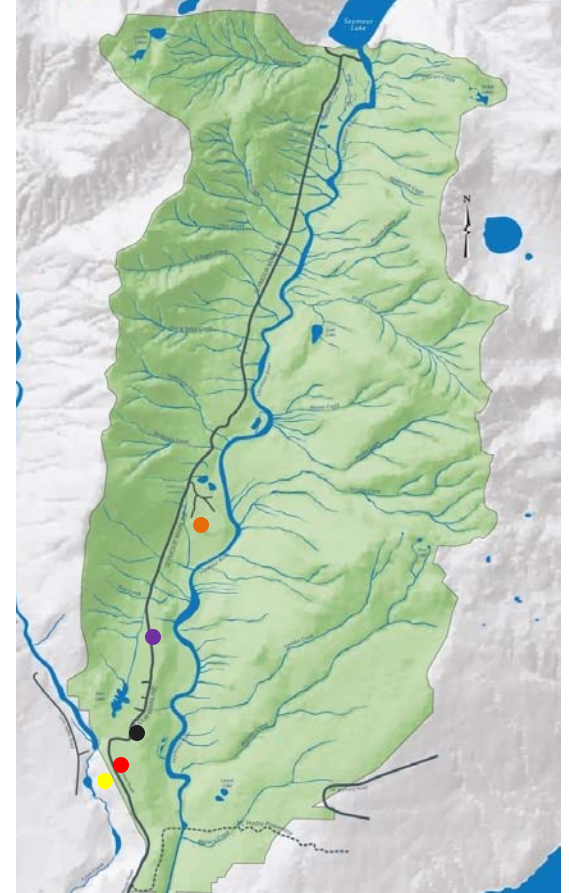
Km 2 Batch Plant Site ●

LSCR Construction Trailers Parking Lot ●

Tunnels Office Trailers ●

Tunnels (Seymour Shaft) ●

Lower Seymour Conservation Reserve



LSCR Km 4 Gravel Pit



An aerial photograph showing a large-scale construction material processing site. The site is characterized by several large, conical piles of light-colored sand and gravel. In the center, there is a large, circular pile of material. To the left, a long, straight pile of material runs parallel to a paved road. Various pieces of heavy machinery, including trucks and excavators, are visible near the piles. The site is surrounded by dense evergreen forests, with a road running along the left edge. The overall scene depicts a significant industrial operation within a natural, wooded environment.



LSCR Construction Trailer Site



Tunnels Office Trailers



Tunnels (Seymour Shaft)

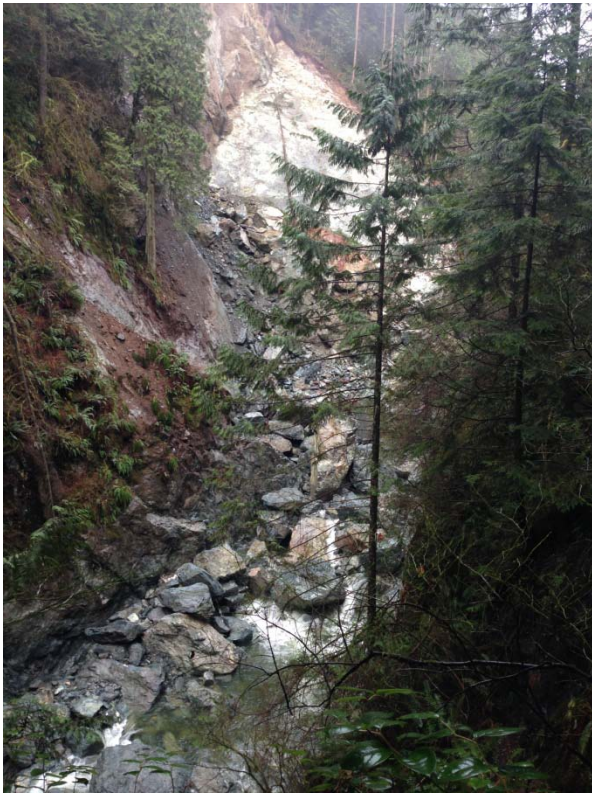


Lower Seymour Conservation Reserve

- **History**
 - **2014 Activities**
 - **Site Restoration Plans for Capital Project Sites**
 - **Rockfall Seymour Canyon**
- 

Seymour Canyon Rockfall





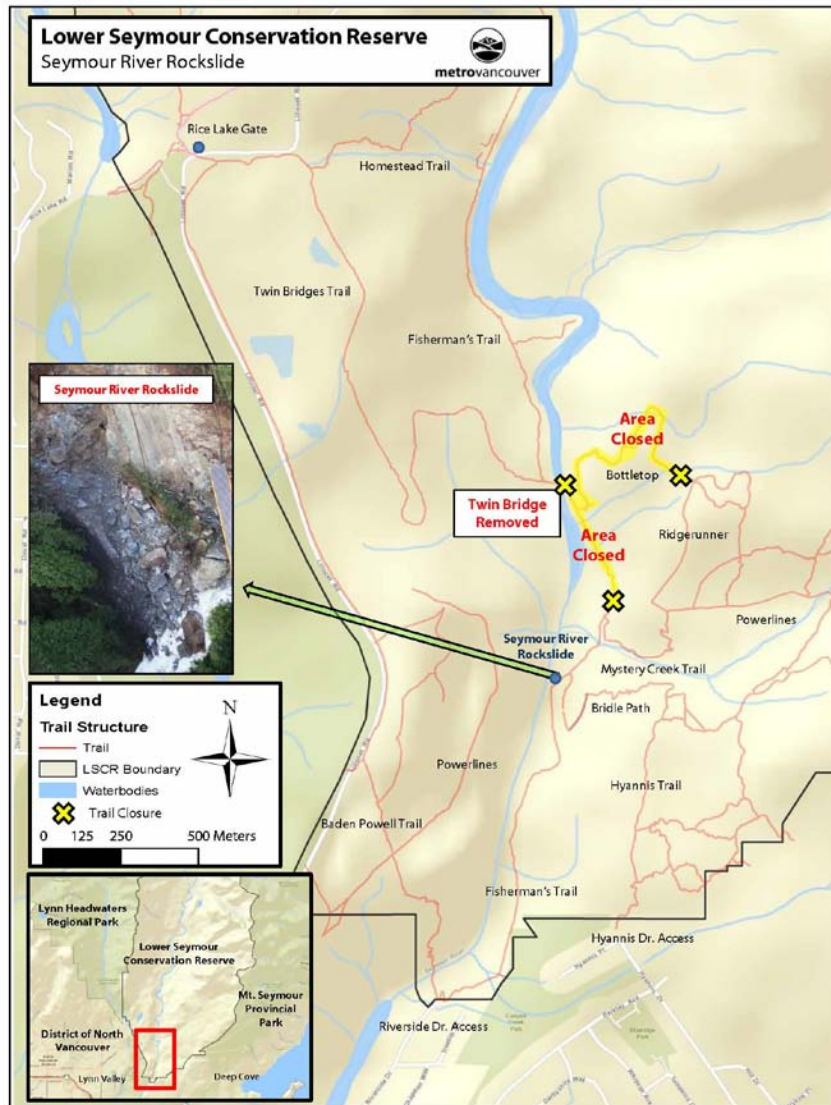


Impacted Infrastructure

Fisherman's Trail

Bottletop Trail

Twin bridge



Twin Bridge Prior to Dec 8
2014



Twin Bridge Dec 9 2014



Twin Bridge Dec 10 2014

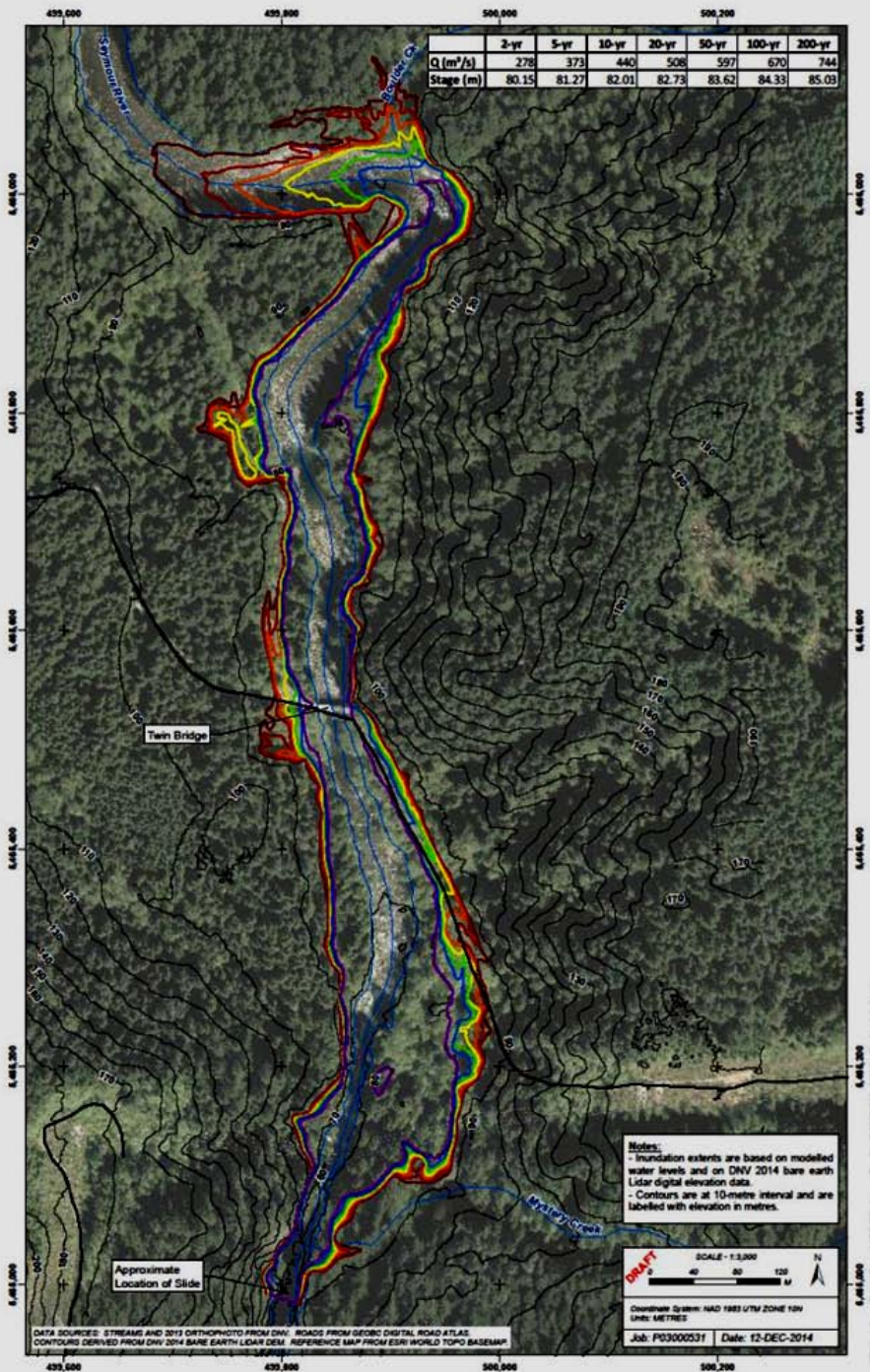


Bridge site Jan 30 2015

Moderate rain event



Draft Inundation Map



Potential Barrier for Fish



Questions

