

## 16 PLAN DATA

**LAND USE** - This plan sets out the structure and broad land use patterns for the long term development of the District of North Vancouver. Details of the type and density of proposed future land uses within any given neighbourhood will be set out in the local area official community plan for that area. The Zoning Bylaw governs the requirements for development of existing parcels and may only be revised in accordance with the official community plan or plans for the area.

**ROADS AND UTILITIES** - The existing major road network is shown on the Plan Map. Future improvements to the network are the subject of a joint study now being conducted by the City and District of North Vancouver. The District of North Vancouver is a member municipality of the Greater Vancouver Water District and the Greater Vancouver Sewerage and Drainage District. Information on the general location and phasing of roads, water system, sanitary sewer and drainage systems may be obtained from the municipal Engineering Services Division. The locations of known sand and gravel deposits are also available from the same source. Solid waste disposal is provided by the Greater Vancouver Regional District. B.C. Hydro and Power Authority, B.C. Gas, B.C. Telephone, and Shaw Cable provide other utilities.

**COMMUNITY FACILITIES** - Public elementary and secondary schools are administered by School District 44 North Vancouver. Recreational facilities are operated for the City and District of North Vancouver by the North Vancouver Recreation Commission. Information on facilities and programs is available from the above agencies. The District of North Vancouver operates its own extensive municipal park system and library system. Additional parks and recreation areas are operated in the municipality by the Greater Vancouver Regional Parks Department, Greater Vancouver Water District, B.C. Parks Branch and Grouse Mountain Resorts. The general locations of these institutional, recreation and park facilities and proposed facilities are shown on the Plan Map. Fire protection is provided by the District of North Vancouver Fire Department. The R.C.M.P. provide police protection under joint contract with the City and District of North Vancouver. Emergency rescue and disaster coordination are provided to the three North Shore municipalities by the North and West Vancouver Emergency Program. Ambulance service is provided by B.C. Emergency Health Services. General hospital facilities are located at Lions Gate Hospital in the City of North Vancouver. Public health services are provided to the three North Shore municipalities by the North Shore Union Board of Health.

## SCHEDULE OF PLAN MAP LAND USES

**RESIDENTIAL:** Areas presently developed or to be developed for residential housing at various densities. The housing type and density range are established in the local area community plans.

**URBAN RESERVE:** Areas located generally between the 150 and 350m elevation identified as suitable for future residential housing development.

**INSTITUTIONAL:** Existing and proposed sites for schools, churches, theatres, recreation centres, and public buildings.

**COMMERCIAL:** Existing and proposed sites suitable for a range of local and community retail, office and service uses.

**INDUSTRIAL:** Areas providing for a range of manufacturing, warehousing, transportation, and port industrial uses.

**MIXED-USE:** Areas providing for a combination of industrial and commercial uses.

**PARKS, RECREATION AND WILDERNESS AREAS:** Areas designated principally for the preservation and enjoyment of the natural environment, outdoor recreational use, and regional water supply.

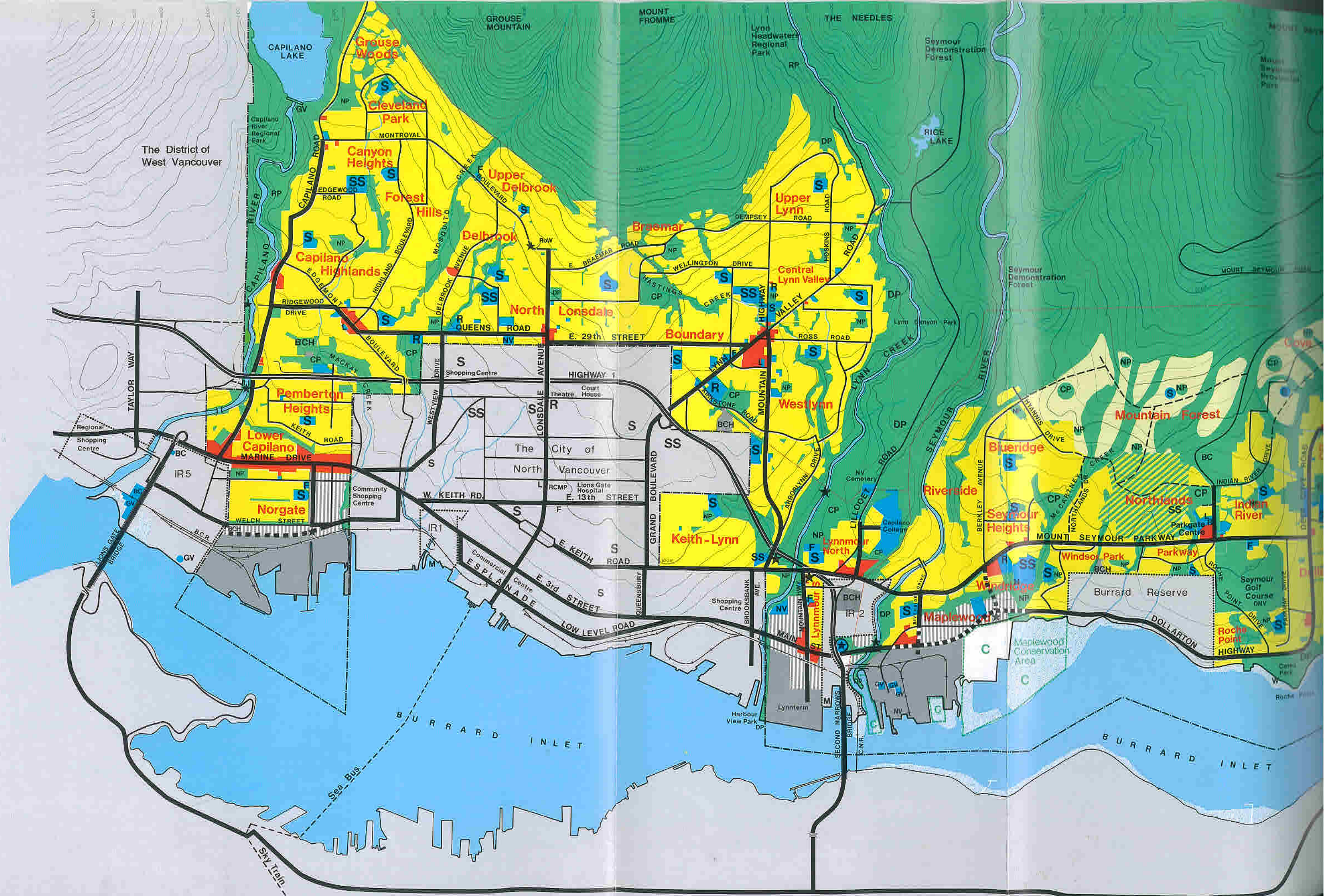
**CONSERVATION AREAS:** Areas designated principally for the protection of fish and wildlife habitat, and, the natural environment.

# PLAN DATA

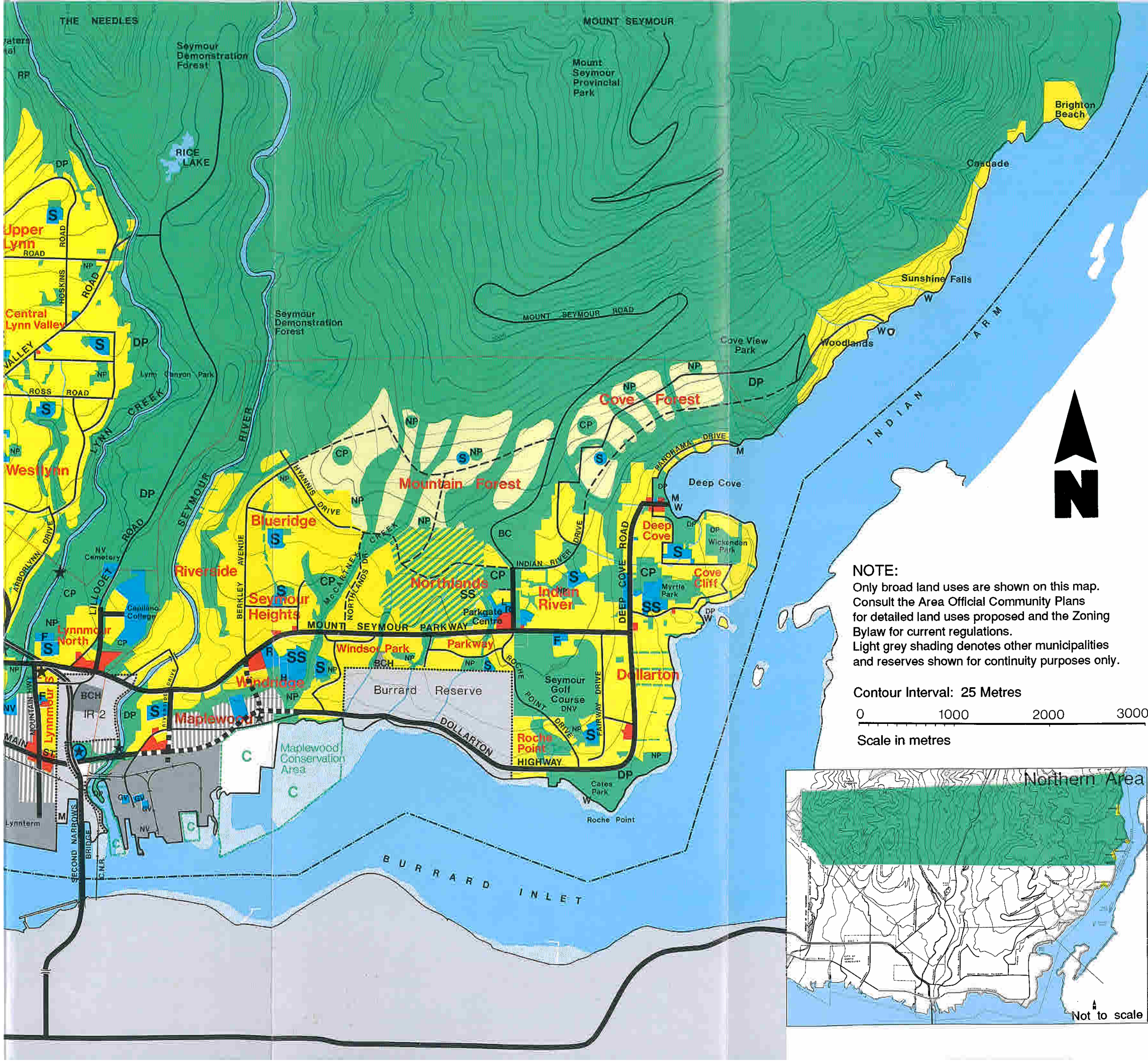
LAND USE	URBAN AREA	URBAN RESERVE	ALPINE AREA	TOTAL AREA	%
<u>RESIDENTIAL</u>					
Includes: roads and creek allowances.	2735 ha	285 ha	92 ha	3167 ha	19.5
<u>INSTITUTIONAL</u>					
Includes: schools, churches, and public buildings.	136	5	0	145	0.9
<u>URBAN PARKS</u>					
Includes: major river parks and lower Seymour Demonstration Forest lands.	1111	215	0	1345	8.3
<u>COMMERCIAL</u>					
Includes: retail centres and districts.	100	0	0	100	0.6
<u>MIXED USE</u>					
Includes: business and light industrial.	130	0	0	130	0.8
<u>INDUSTRIAL</u>					
Includes: port, general and light industrial.	350	0	0	350	2.1
<u>CONSERVATION, LAND</u>					
* Alpine Areas are under study.	30	0	500*	530	3.3
<u>WILDERNESS</u>					
natural parks and recreation areas above urban development and regional water supply areas.	0	0	10470	10470	64.5
<u>NORTHLANDS GOLF COURSE</u>					
Mixed Use Area					
Includes: residential, institutional, parks and recreational, and golf course.	78 ha				
<u>TOTAL LAND AREA</u>	4670 ha	505 ha	11062 ha	16237 ha	100%
<u>CONSERVATION, INTERTIDAL</u>				70	
<u>OTHER AREAS, INTERTIDAL</u>				12	
<u>WATER AREAS</u>				1500	
<u>TOTAL AREA OF THE DISTRICT OF NORTH VANCOUVER</u>				17819 ha	

All areas are rounded estimates as of 1990.





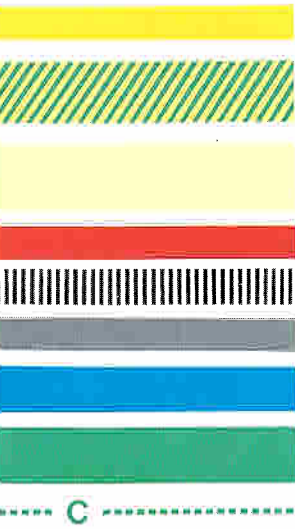




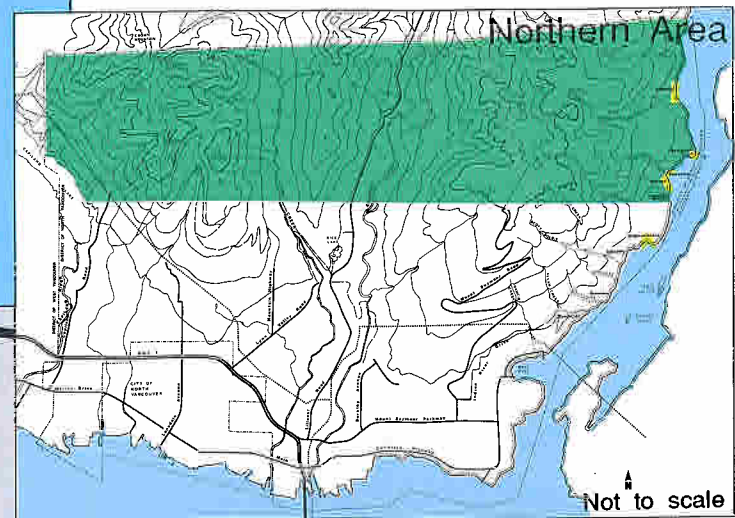
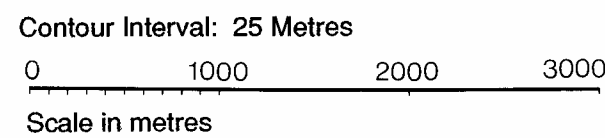
**THE DISTRICT  
OFFICIAL COMMUNITY PLAN**  
PLAN MAP DNV 01  
BYLAW 6300  
Consolidated to Amending Bylaw 6401  
November 1991



- RESIDENTIAL LAND USE  
RESIDENTIAL / INSTITUTIONAL/  
PARKS / RECREATIONAL  
Including Golf Course  
URBAN RESERVE AREA  
Future Residential Use  
COMMERCIAL LAND USE  
MIXED USE  
INDUSTRIAL LAND USE  
INSTITUTIONAL USE  
Including Schools and Public Buildings  
PARKS, RECREATIONAL  
AND WILDERNESS AREAS  
CONSERVATION AREA  
ROAD  
PROPOSED ROAD  
RAILWAY  
MAJOR POWER LINES  
INDIAN RESERVE BOUNDARY  
MUNICIPAL BOUNDARY



**NOTE:**  
Only broad land uses are shown on this map.  
Consult the Area Official Community Plans  
for detailed land uses proposed and the Zoning  
Bylaw for current regulations.  
Light grey shading denotes other municipalities  
and reserves shown for continuity purposes only.



- Provincial  
BC Hydro Substation  
Fire Department  
Greater Vancouver Regional District  
Library  
Municipal Building  
Public Recreation Centre  
Retained Road Right of Way  
Elementary School existing / proposed  
Secondary School existing / proposed  
Health Services  
Community Park existing / proposed  
District Park existing / proposed  
Neighbourhood Park existing / proposed  
Regional Park  
Public Wharf  
Marina / Yacht Club  
Refer to Transportation Section of OCP text

- BC  
BCH  
F  
GV  
L  
NV  
R  
RoW  
S  
SS  
H  
CP  
DP  
NP  
RP  
W  
M  
★