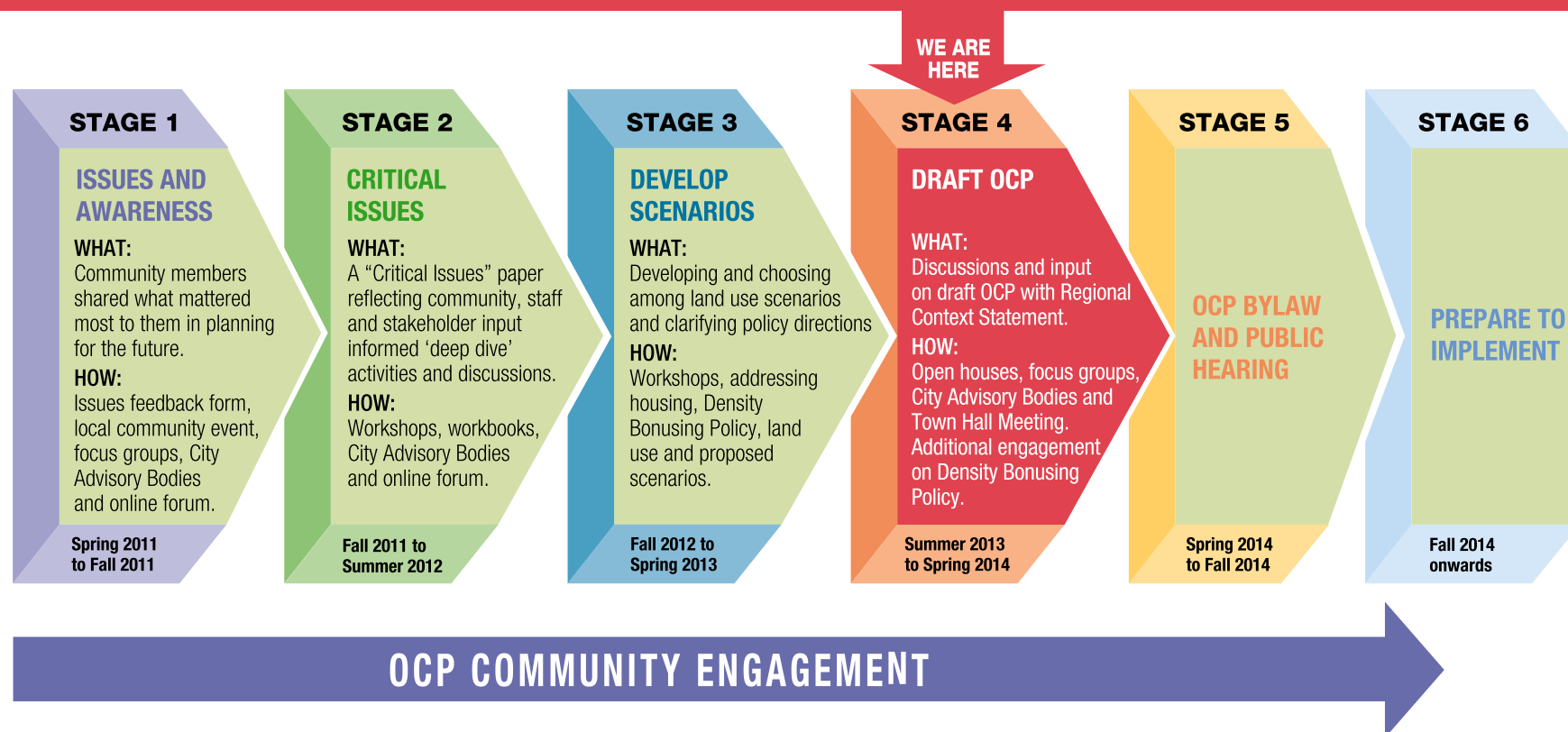


WHERE ARE WE IN THE PROCESS?

City of North Vancouver OCP Proposed Timeline



HOW YOU CAN GET INVOLVED

Council has referred the Draft OCP for public input and discussion. There are many ways to participate and keep informed of upcoming activities:

- Sign up for regular updates at CityShaping@cnv.org
- Attend an Open House
- Fill out a Feedback Form
- Review the latest Summary Reports
- Follow us on Facebook, Twitter
- Check our webpage regularly at www.cnv.org/CityShaping

Whether you have followed the whole process or are just joining in now, your input will help make the City an even better place to live.

FOR MORE INFO

This handout includes an overview of some key policy changes. For more information please review the Draft OCP. This document and background materials are available at cnv.org/CityShaping.



[facebook.com/CityOfNorthVancouver](https://www.facebook.com/CityOfNorthVancouver)



twitter.com/CityOfNorthVan

CONTACT US

City of North Vancouver
141 West 14th Street
North Vancouver, BC V7M 1H9
CityShaping@cnv.org

Email: CityShaping@cnv.org
www.cnv.org/CityShaping
Phone: 604.990.4240

REGIONAL CONTEXT

The Metro Vancouver Regional Growth Strategy (Metro Vancouver 2040: Shaping our Future) focuses on land use policies to guide the future development of the region and support the efficient provision of transportation, regional infrastructure and community services. A Regional Context statement outlines how each Metro Vancouver municipality will accommodate its share of the regional growth and how local policies align to support the Regional Strategy.



DRAFT PLAN AT-A-GLANCE



This map supports plan objectives through land use. The annotations below highlight some of the key changes to the updated land use map.

WHAT ARE THE 10 BIG CHANGES?

The Draft OCP builds on the basic framework and many of the goals and objectives of the City's current Plan. This includes the ongoing pursuit of a compact and complete urban community with a mix of housing and employment opportunities well served by transit and amenities. It also includes an integrated set of policies to maintain a distinctive sense of place and the development of a sustainable and highly livable city.

Although many of the current Plan's goals and objectives have been maintained, some of the major changes in the Draft OCP include:

- 1. Longer Time Horizon:** This plan includes a Community Vision to the year 2031 and, in keeping with the Regional Growth Strategy, has 2041 on the horizon.
- 2. Updated Community Vision and Sustainability Framework:** An interlinked set of community values centred on a vision of the City in 2031 has been introduced.
- 3. New Policy Components:** New policies addressed in this plan include adaptation to climate change, connecting health and the built environment, public safety, and a greater focus on affordable housing options.
- 4. Partnership with Vancouver Coastal Health:** The City has partnered with VCH to incorporate a health lens into the OCP.
- 5. Planning for Future Transit Land Use Corridors:** Changes to the City's Land Use Plan support TransLink's Frequent Transit Network.

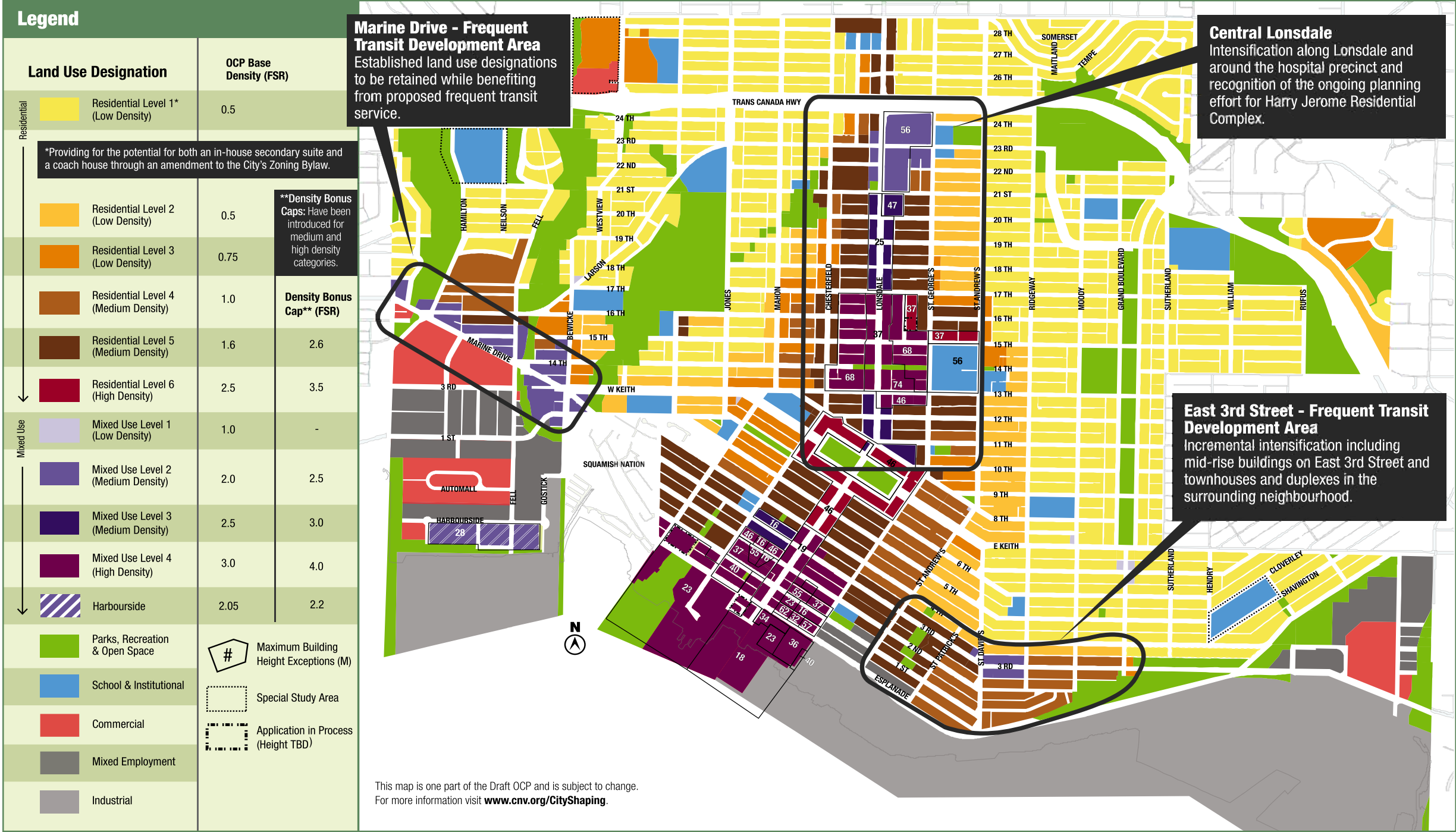
- 6. Land Use Changes:** Changes include: 1) Central Lonsdale 2) E. 3rd St. Area, and 3) Two Secondary Suites in Residential Level 1.

- 7. Small Commercial Nodes:** The plan enables small scale mixed uses in residential areas such as corner stores.

- 8. New Development Permit Areas (DPAs):** DPAs allow the City to establish specific guidelines in its Zoning Bylaw for entire areas on issues such as form, character and hazard mitigation.

- 9. Introduction of Density Bonus Caps:** Density bonus caps have been introduced in the OCP. A separate Density Bonus and Amenity Contribution Policy is also available for public input.

- 10. Sustainability Targets and Indicators:** Sustainability Targets and Indicators provided in each chapter are tied to specific policy objectives.



POLICY AREAS



Land Use – Housing, Population and Employment
Decisions around land use are key to developing a complete, compact, urban community with easy access to a variety of housing types, transit, employment and recreation.



Parks, Recreation and Open Space
A linked system of public spaces, indoor and outdoor recreational facilities and services, parks, greenways and natural areas for healthy, active living and community gatherings are important to a complete community.



Transportation, Mobility and Access
One of the most significant issues facing the community is meeting its transportation needs through a variety of convenient transportation choices while supporting efficient goods movement. This includes planning for those with disabilities, limited mobility and residents with low income.



Arts, Culture and Heritage
A creative community, building on the diversity of its people, landscape and history to inspire innovation and reinforce sense of place.



Community Well-being
Fostering a community where people are supported and encouraged in an inclusive, healthy and safe environment.



Economic Development
When the economy is working well, the community prospers, enabling community members to support themselves and providing a strong tax base from which to fund services and infrastructure.



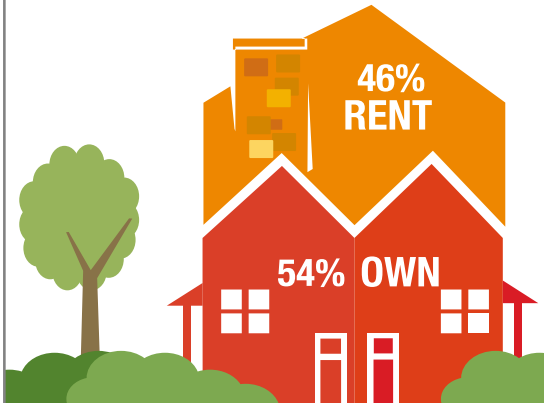
Natural Environment, Energy and Climate
A healthy environment for the future includes protecting and improving ecological health, reducing greenhouse gas emissions, and integrating climate adaptation measures.



Municipal Services and Infrastructure
Building a financially sustainable legacy of green, durable, timeless infrastructure and responsive, thoughtful delivery of services helps to sustain the health and well-being of the community.

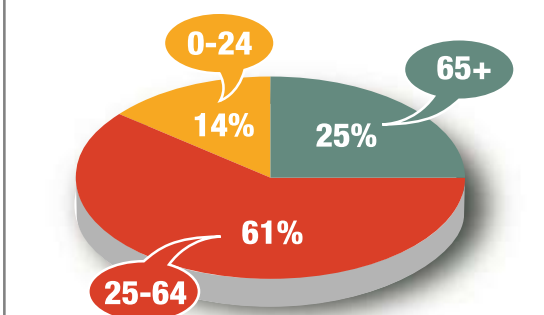


TENURE



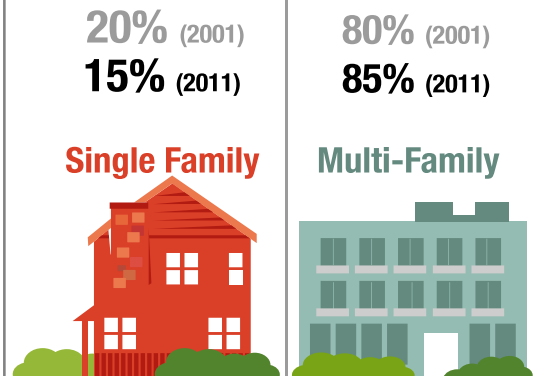
Source: Statistics Canada – 2011 National Household Survey

AGE



Source: Statistics Canada – 2011 National Household Survey

DWELLING TYPE



Sources: Statistics Canada – 2001 Census / 2011 National Household Survey

This map supports plan objectives through land use. The annotations below highlight some of the key changes to the updated land use map.

