

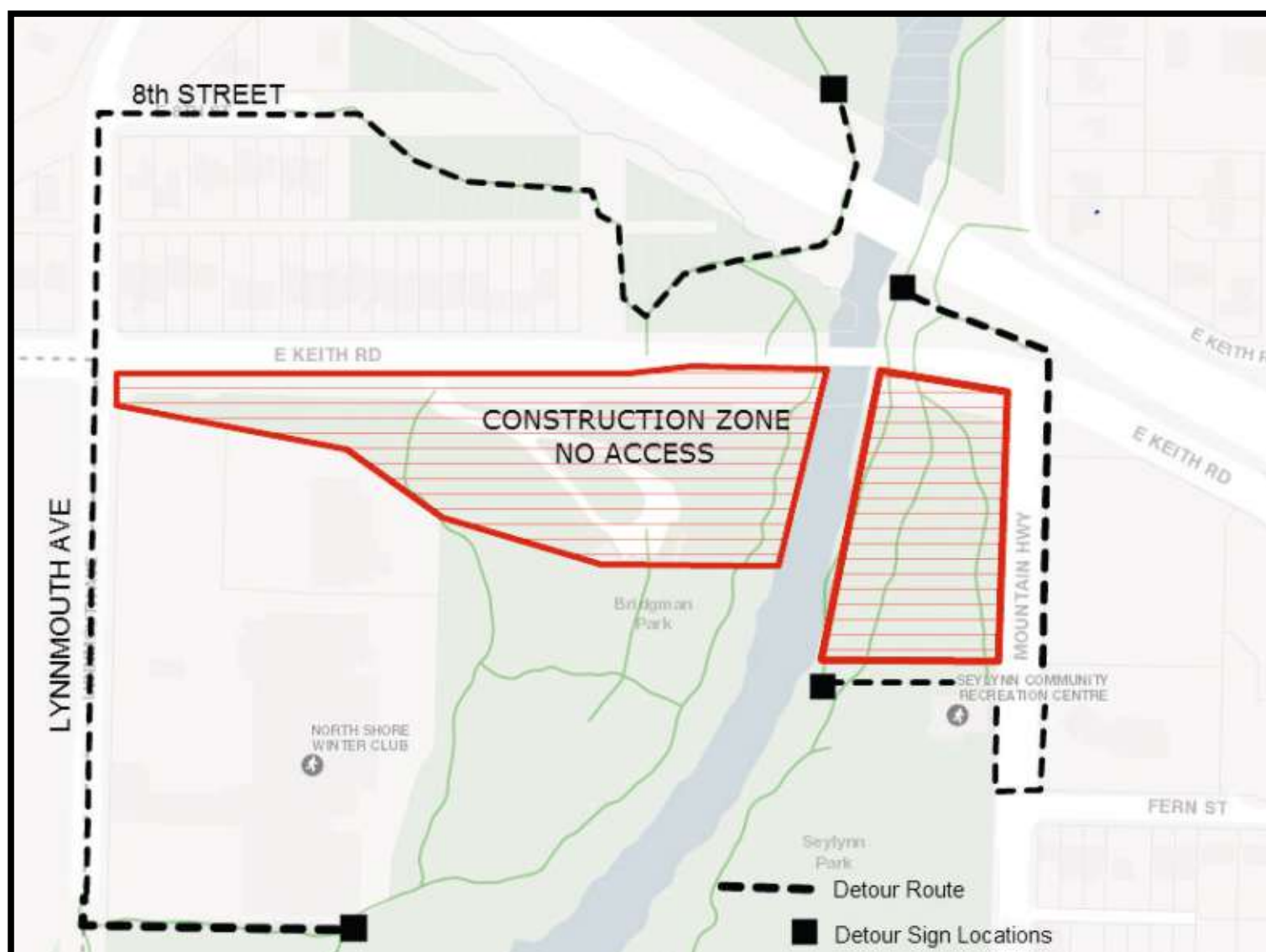


# TRAIL CLOSURES

## Keith Road Bridge Project

To ensure public safety while the new Keith Road Bridge is under construction, we have closed both the Seylynn and Bridgman Park trails underneath the bridge for the duration of the project.

**Pedestrian and cycling traffic will be detoured around the site**



Thank you for your patience as we complete this important work

For traffic and construction updates:

[dnv.org/krbridge](http://dnv.org/krbridge)

[#krbridge](https://twitter.com/krbridge)