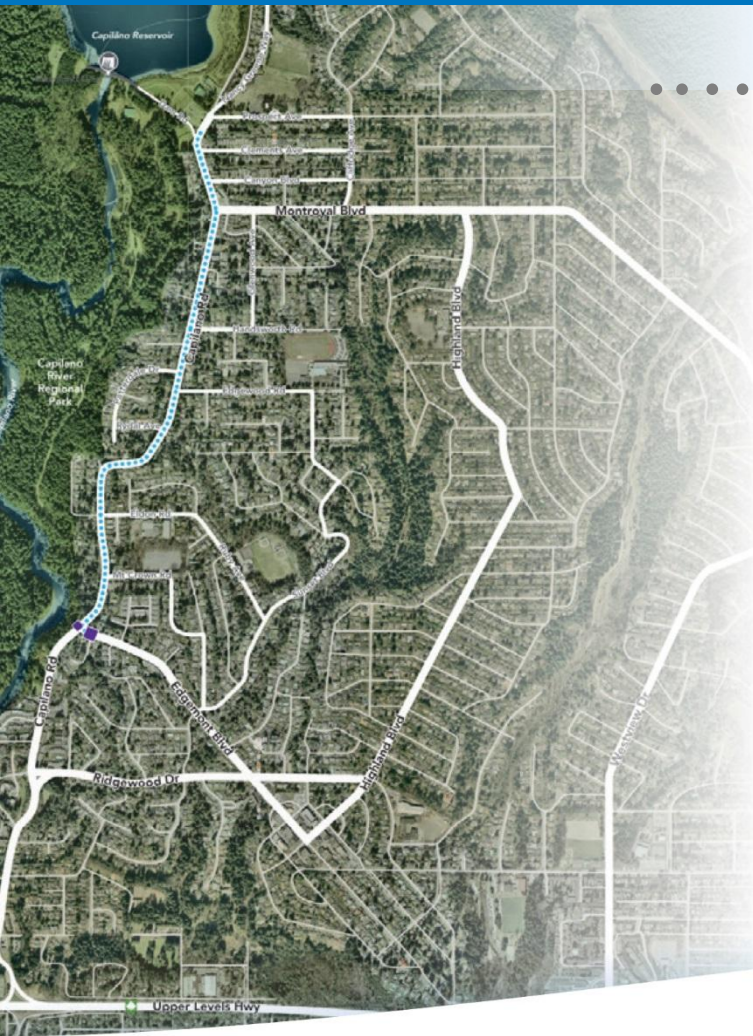


Capilano Water Main Project



EUCCA presentation

1. Project Overview
2. Schedule
3. Minimizing Impacts
4. Traffic Management 1-4
5. Transit
6. Communication Update

metrovancouver

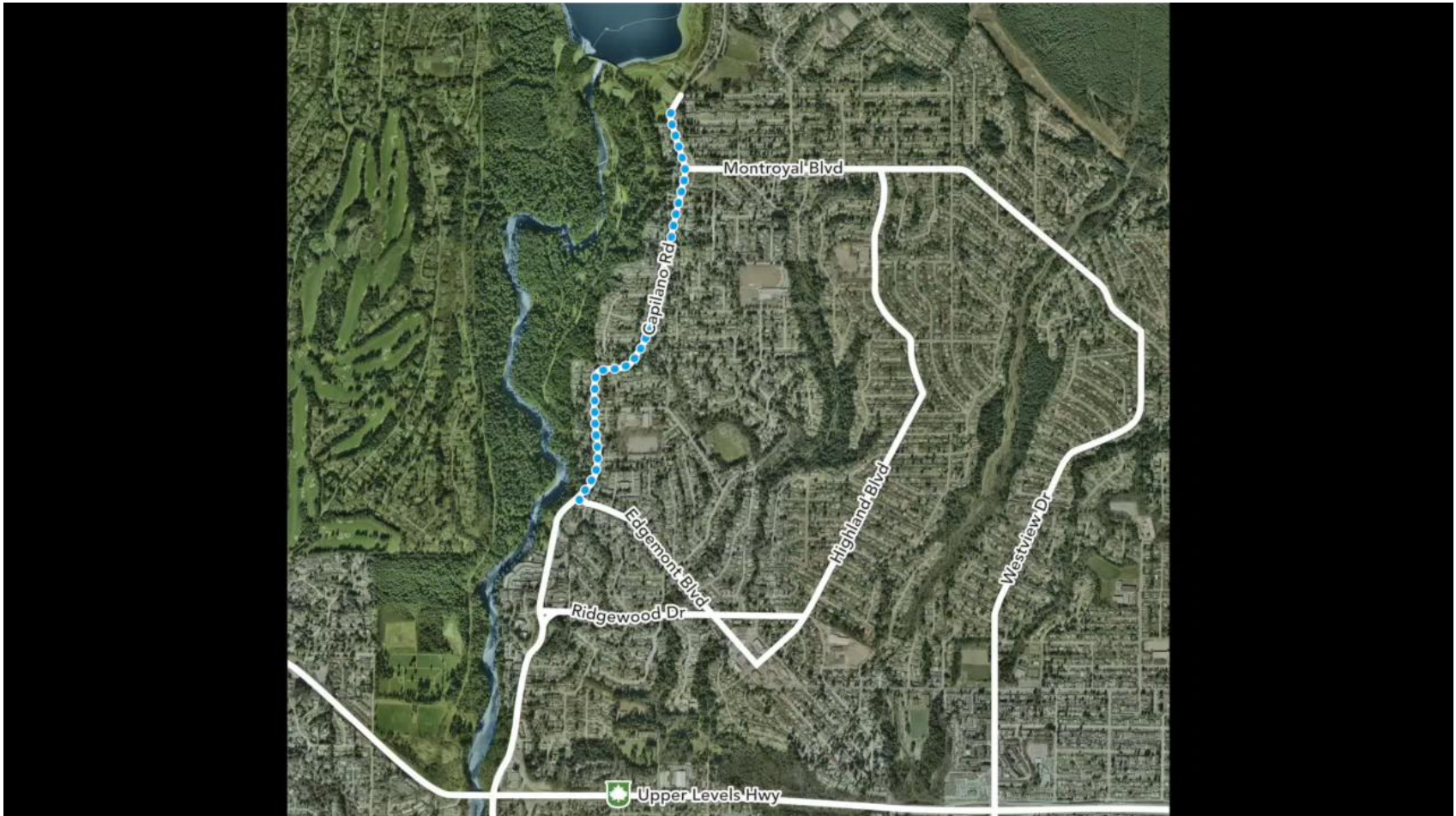
SERVICES AND SOLUTIONS FOR **A LIVABLE REGION**



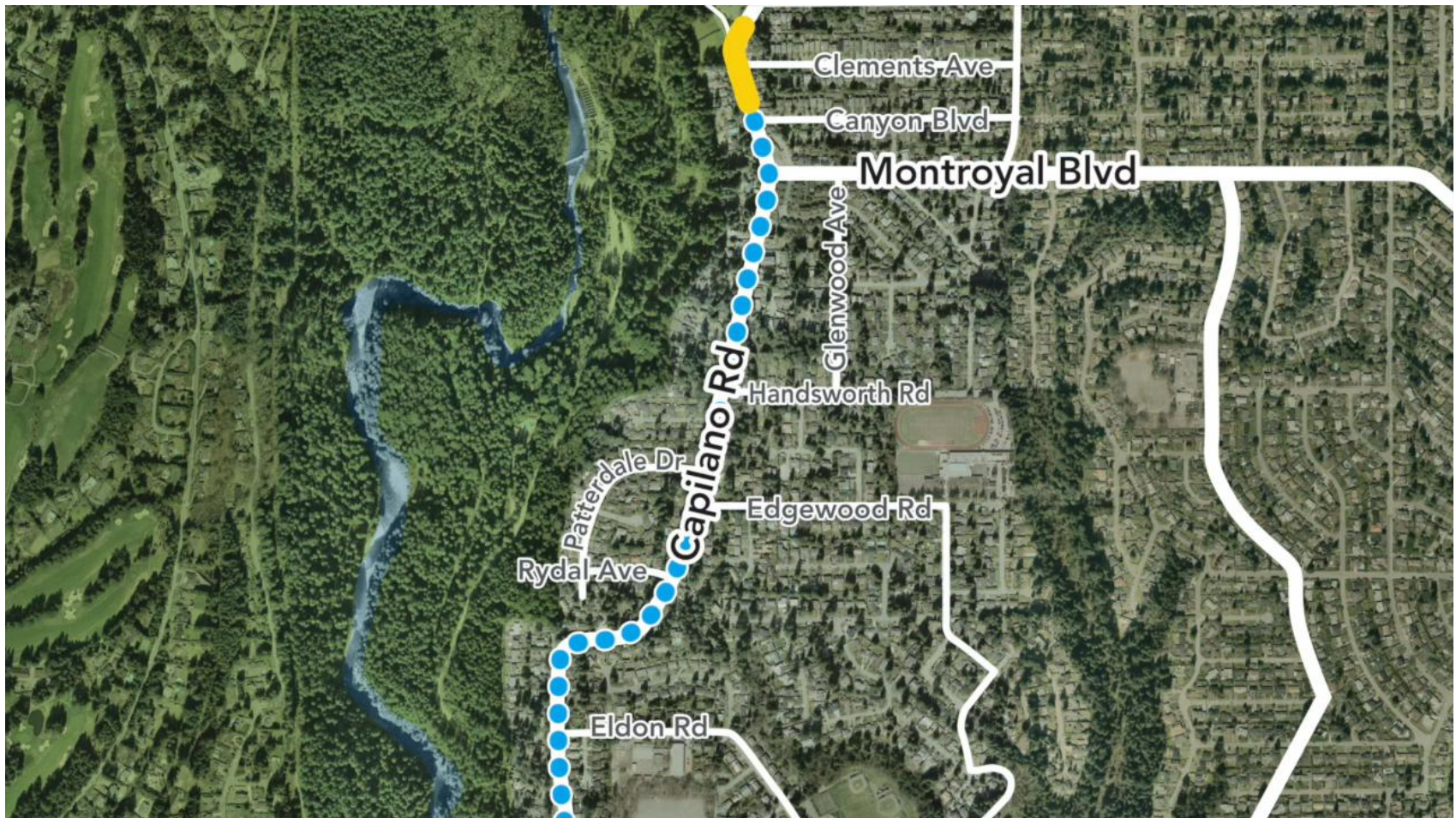
Project area



200-metre construction zone



200-metre construction zone



Project overview

Legend

..... New Pipe Alignment

■ Valve Chambers

↔ Detour Routes

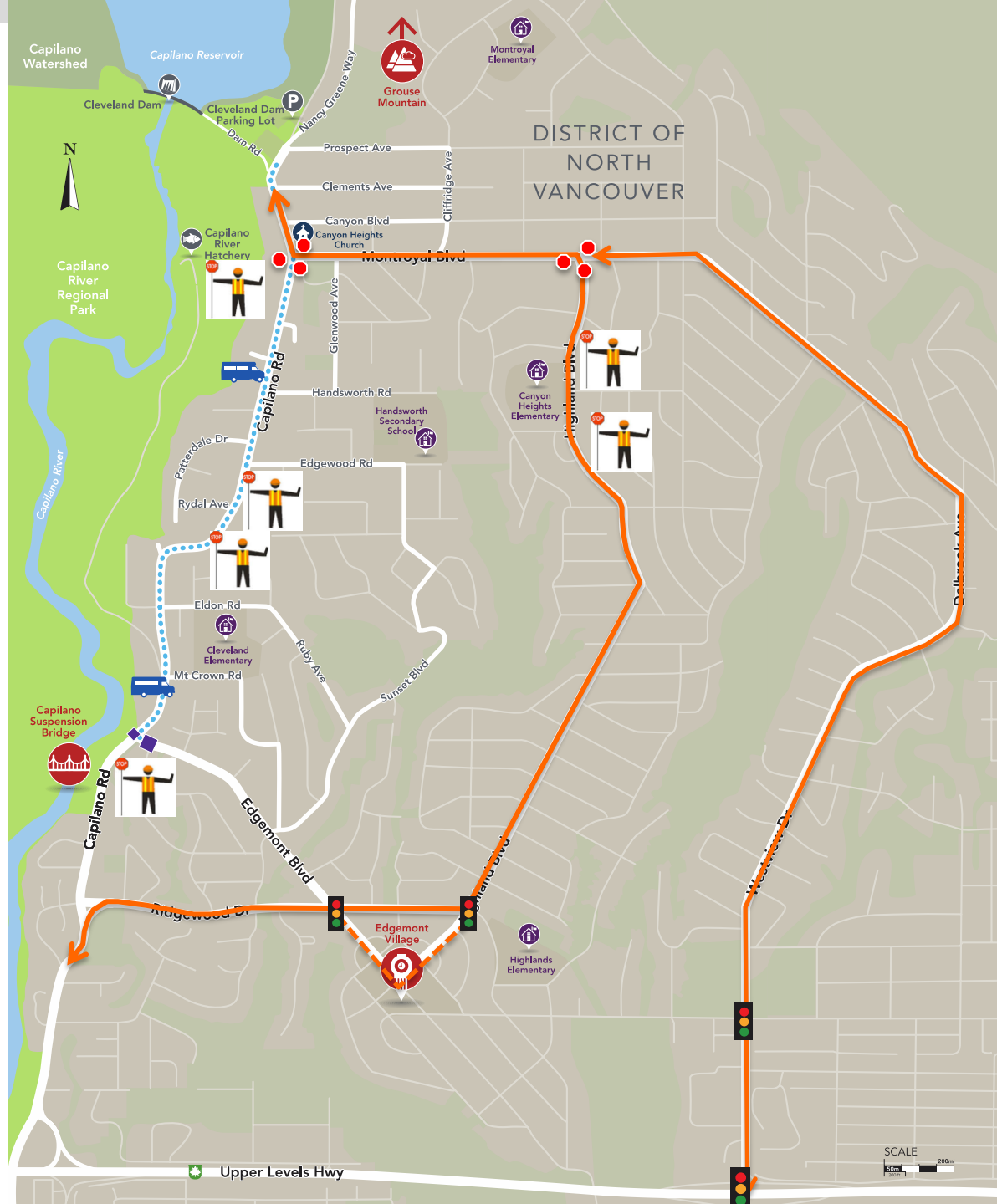
🚌 Shuttle Bus

🛑 New Temporary All-Way Stops

🚦 Temporary Signal Control

🏫 School

🚧 Traffic Control + 4

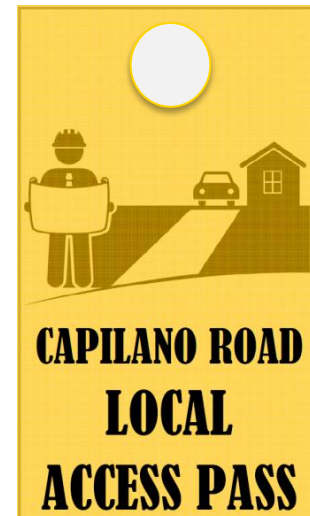


Project timeline

Timeframe:	January 2013 – August 2015	August 2015 – January 2016	January 2016 – April 2016	May-June 2016
Project Activity:	Project planning, design, and preparation	Construction – Pipe Installation	Construction – Valve Chamber	Project complete and final restoration

Minimizing project impacts

- Construction zone 200m
- Capilano Road open to local traffic
- Capilano Road Local Access Pass



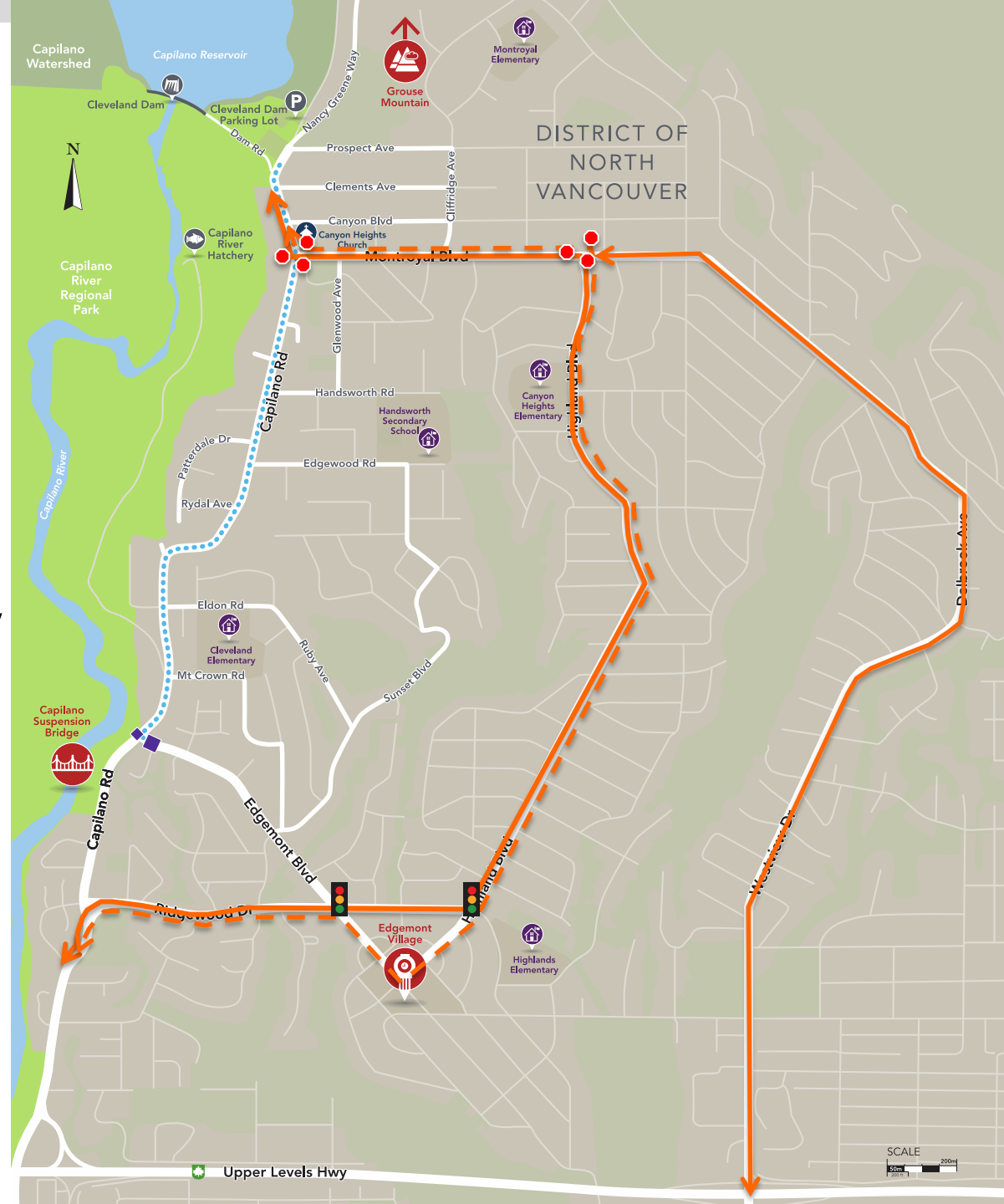
Managing Traffic - 1

Coordinating with DNV

Keep traffic moving, safely

Ensure safety in project area and on detour routes

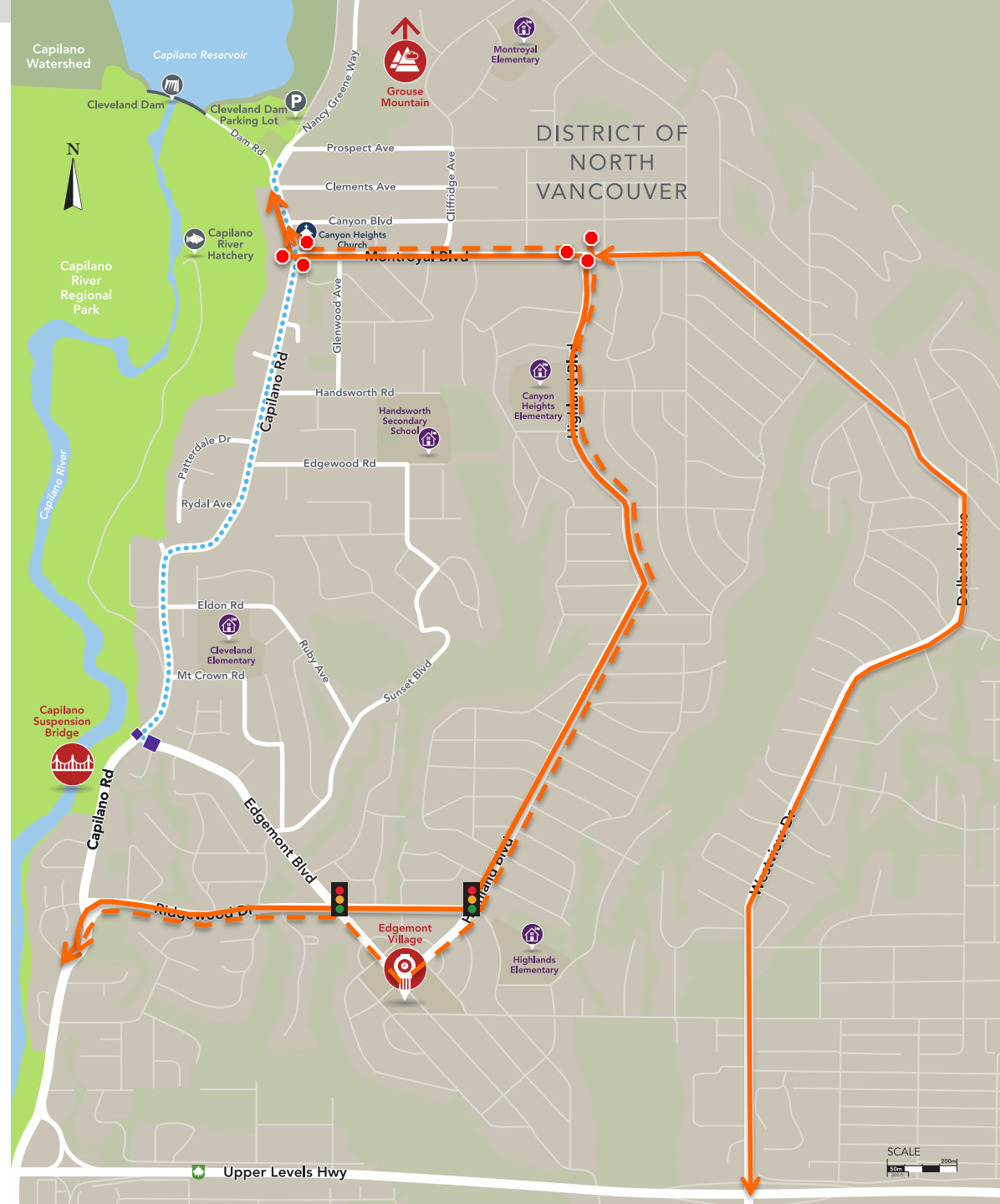
Ensure emergency vehicle access at all times



Managing Traffic - 2

September 2015 –
January 2016

Detouring commuter
traffic away from the
project area



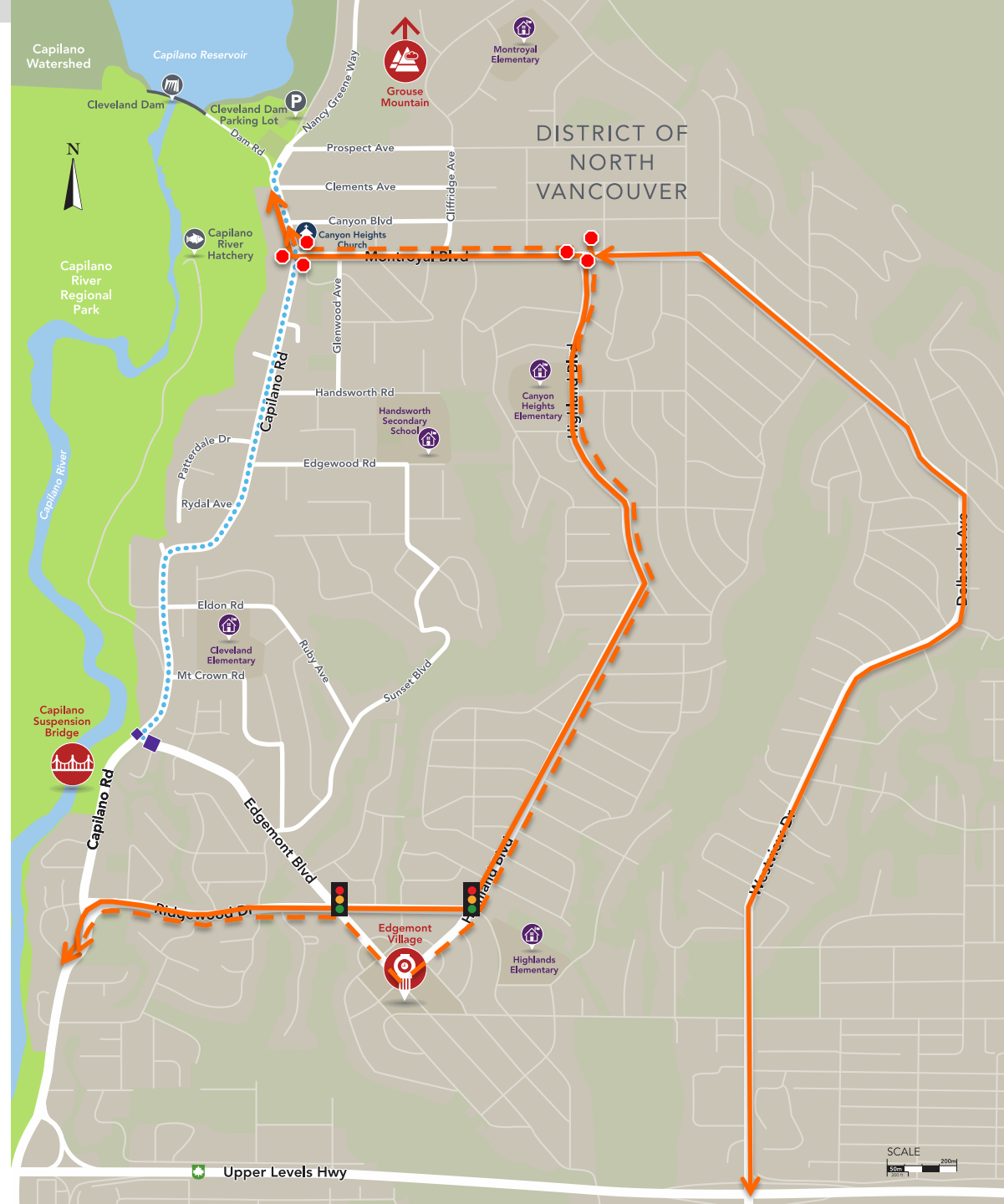
Managing Traffic - 3

Monitoring

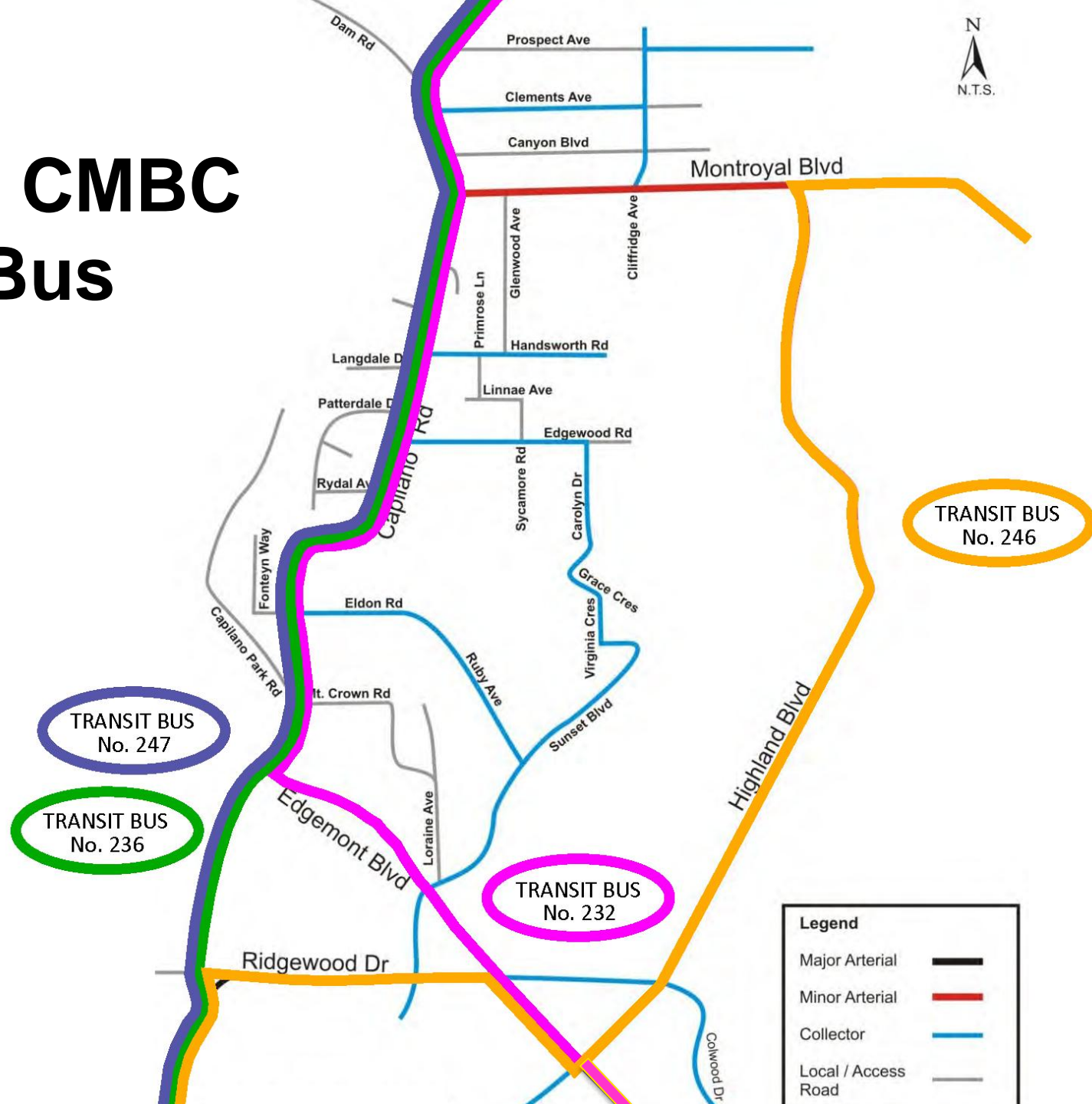
- CLO, Traffic Engineering consultant on site
- RCMP
- Traffic cameras at key intersections
- Contractor's Traffic Management Supervisor
- Daily meetings between DNV staff, Traffic consultant, and MV staff on traffic management

Managing Traffic - 4

Streets review

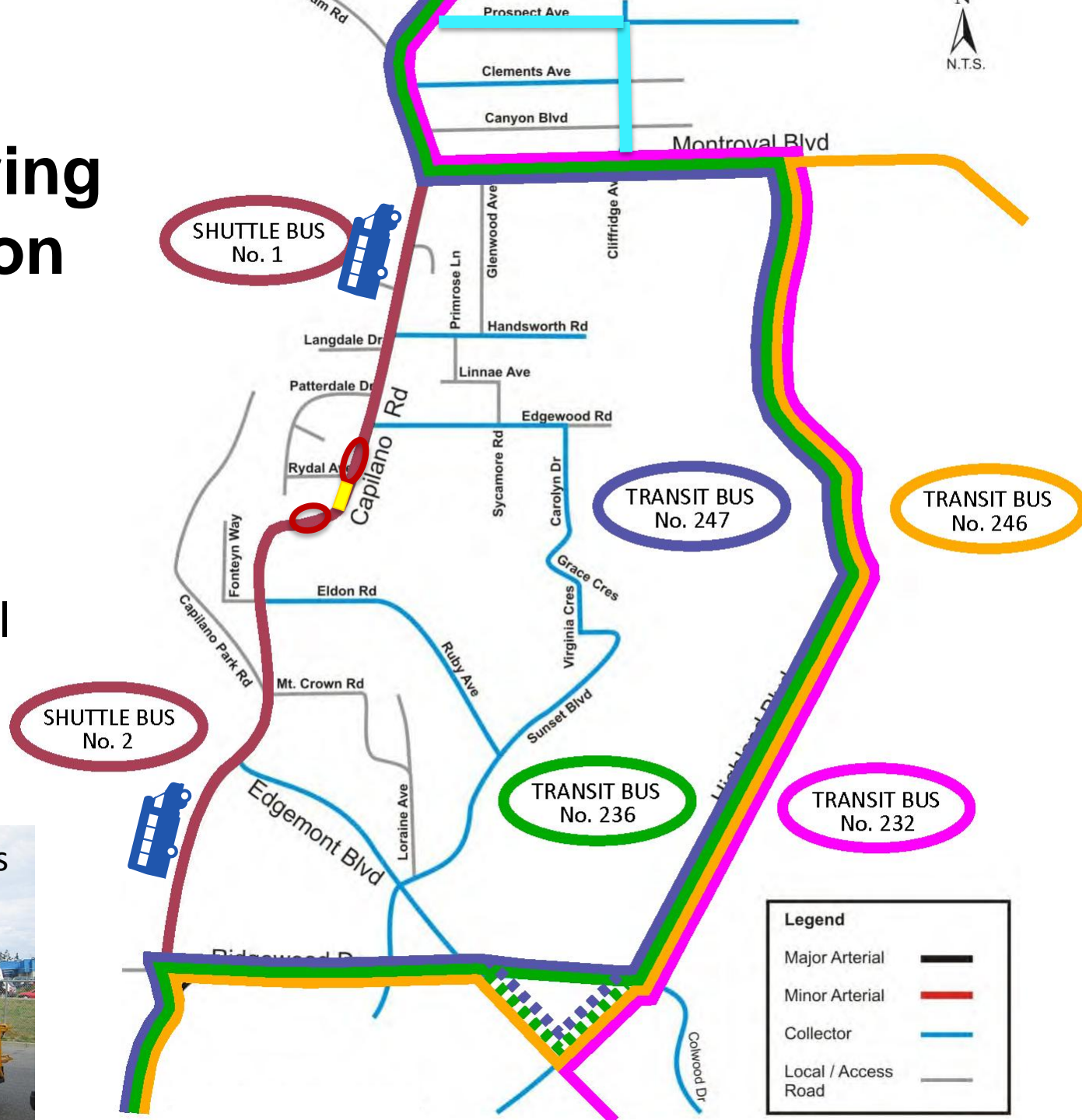


Existing CMBC Transit Bus Routes

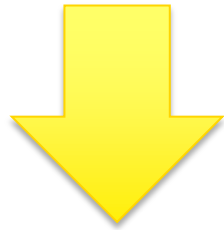


Transit During Construction Detour

- Transit shuttle
- Bus detours
- Effects on local street parking



Community outreach and communications



Timeframe	January 2013 – August 2015	August 2015 – January 2016	January 2016 – April 2016	May-June 2016
Project Activity:	Project planning, design, and preparation	Construction – Pipe Installation	Construction – Valve Chamber	Project complete and final restoration
Community outreach activity:	Initial outreach, stakeholder and community meetings, public meeting	Ongoing community engagement	Ongoing community engagement	Final communications

Capilano Drinking Water Project



Questions?





Project scale



Construction traffic - deliveries



Construction traffic - pipe delivery



Construction traffic - pipe installation

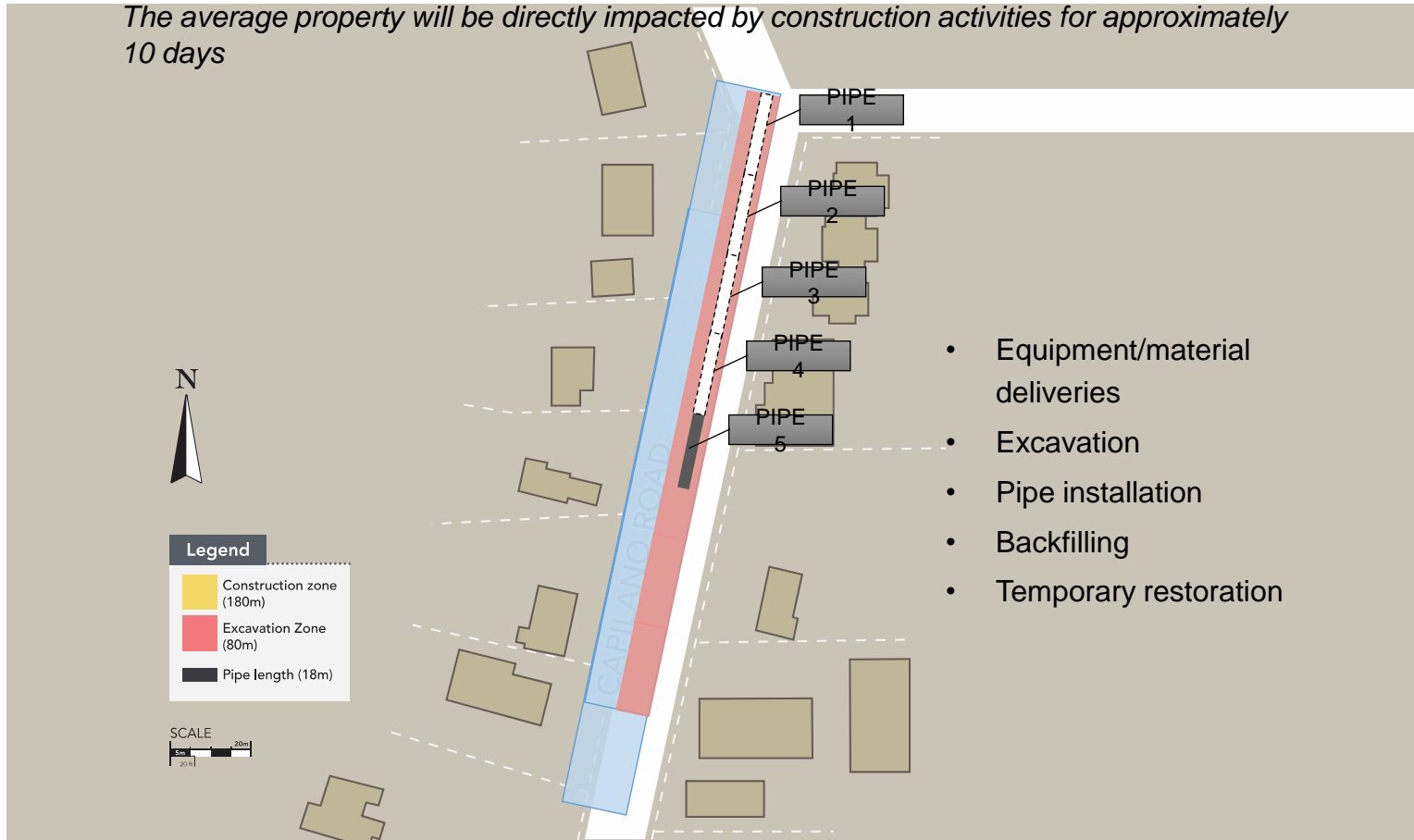


Construction traffic – hauling to/from



Typical watermain construction

The average property will be directly impacted by construction activities for approximately 10 days



Excavation



Backfilling



Temporary pavement

Installed following completion of each segment



Temporary paving complete

Final paving of Capilano Road at end of construction

