

Field of dreams

North Shore News

February 26, 2016 09:19 AM



photo Paul McGrath, North Shore News

Local resident Cecilia Curtis looks over the updated proposals for the new artificial turf at Mahon Park adjacent to Fen Burdett stadium.

The City of North Vancouver hosted an open house on the project at Carson Graham secondary Feb. 24.

© 2016 North Shore News

[Sign up for the North Shore News FREE digital newsletter to receive top headlines from each issue in your Inbox. \(http://www.nsnews.com/newsletter/subscribe\)](http://www.nsnews.com/newsletter/subscribe)

Welcome

Fen Burdett Open House

Artificial Turf Field and Track



What is the Fen Burdett Project ?

- In **2004**, the City prepared an inventory and assessment of potential fields that could be upgraded to artificial turf.
- In **2012**, the City updated the 2004 assessment and Council directed staff to focus on Kinsmen Gravel, Kinsmen Grass and Fen Burdett Stadium.
- In **May 2015**, the community was invited to an Open House to review the Kinsmen and Fen Burdett options.
- In **July 2015**, City Council selected Fen Burdett Stadium as the site of a new artificial turf field.

Project Background

Mahon Park Site History

The park itself was named after Edward Mahon (pronounced Mann) who emigrated from England in 1888 along with his brother.

The Mahon's purchased land throughout the North Shore and formed the North Vancouver Land and Improvement Company. They sold the 40 acre site of the park to the City in 1910 and the park opened officially in 1914 with a dance pavilion and a track with a grandstand that seated 1,000 spectators.



Wire Entanglements

Soon after opening, the park was utilized as a training ground in preparation for World War I by the 6th Field Company of Canadian Engineers branch of the Canadian military.

The 6th Field Company based here provided support during WWI, WWII and conflicts in Korea, The Balkans and Afghanistan.

The large original grandstand saw witness to countless sporting and community events.



Moveable Anti-Aircraft Screen

In 1973, Prime Minister Pierre Trudeau presided over the opening kickoff of the provincial soccer finals here.

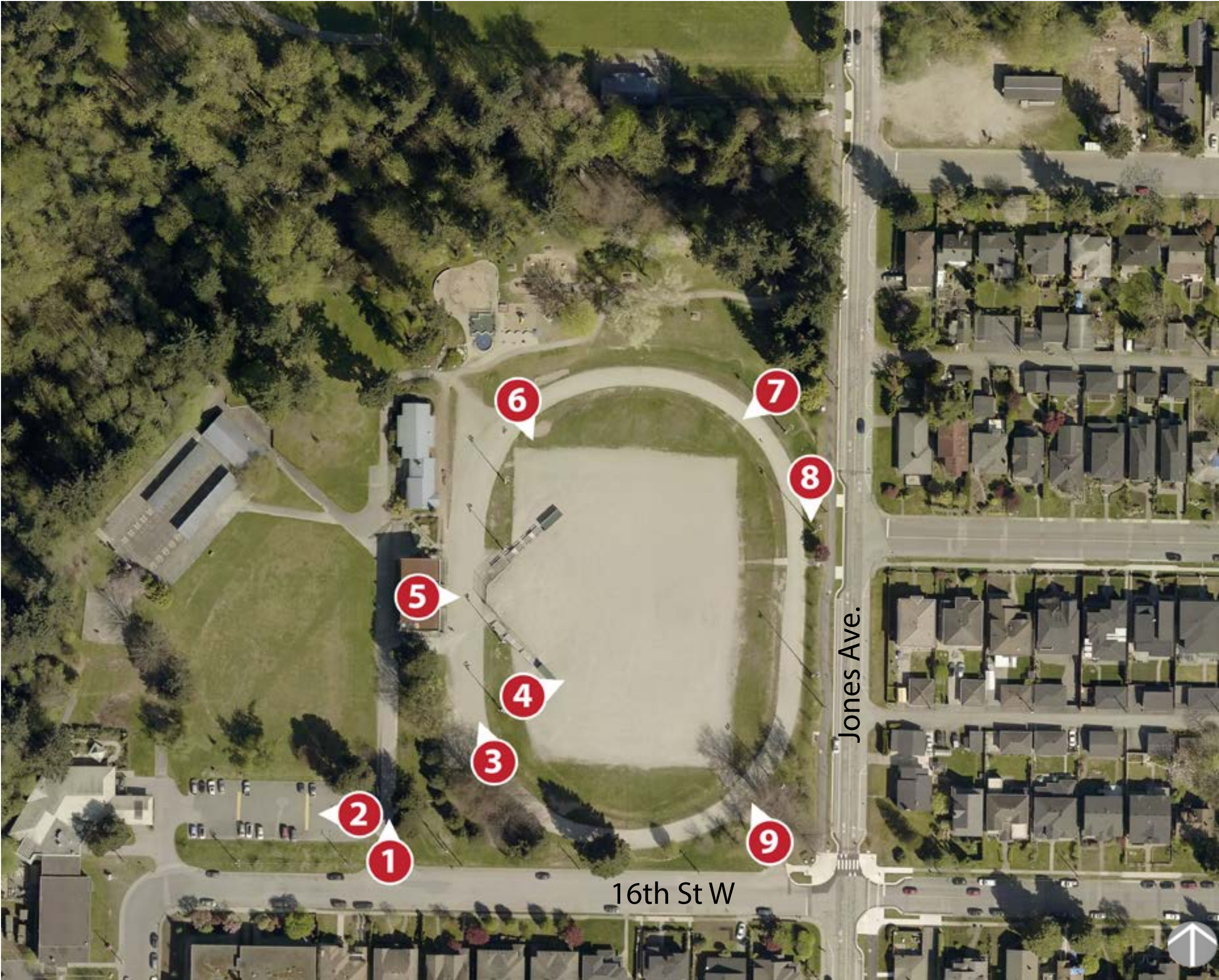
The stadium was named for Fen Burdett, who beginning in 1956 was a manager and sponsor of youth soccer and baseball clubs in North Vancouver. He was inducted into the BC Sports Hall of Fame in 1982.

Excerpt and images from: Chris Mizzoni. "Throwback Thursday: Mahon Park, A Rich Past and Promising Future." Lower Lonsdale. LEDGE Media, 15 Oct. 2015. Web.



Mahon Park Today

Existing Conditions



Opportunities & Constraints Design Rationale



Previous Site Master Plan



Proposed Site Master Plan



Design Evolution

The key elements of the design evolution include;

- In order to keep project costs in check, the surplus turf areas along the sidelines have been reduced.
- The community track has been revised so the field is closer to the grandstand
- More passive use park space between the new field and Jones Ave.
- The new community track meanders, creating a more engaging and diverse experience for all park users
- The ATF practice areas are designed to encourage spontaneous community play
- The use of on-site material creates interesting landforms in the park
- Adult exercise equipment and seating areas integrate with both the active and passive areas in the park
- Connections are enhanced between the street and the parking lots to ensure efficient circulation
- Improving the connection between the existing playground and the active sports area

Design Factors

- Preserving Existing Trees – Mature trees limit the footprint of development, but also enhance the park experience.
- Unsuitable Soils – Material must be removed prior to construction to prevent differential settlement.
- Accessibility – Pedestrian routes to the new facilities are improved
- Parking – Existing facilities upgraded to supply off street spaces
- Vehicle Congestion – Measures to alleviate traffic congestion are needed for those periods where user groups overlap.
- Grading – The new field will be sloped (north to south) as per the existing field
- Park Character - Preserving the open character of the park requires limiting obstructions such as perimeter fencing
- A Sense of Arrival – Attractive and welcoming elements identify the park entrances

Rendered Plan



SITE FEATURES

1. Multi-use Artificial Turf Field
2. Practice Areas - Artificial Turf Field
3. Recreation Track - Rubber Surface
4. Proposed Seat Wall + Slope (See section A-A')
5. New Park Access Path
6. Proposed Field Lighting
7. Enhanced Park Entrance + Maintenance Access
8. Potential Fitness Nodes
9. Overflow Gravel Parking Lot on Jones Ave. with 38 Stalls
10. Players' Shelters
11. Seat Wall Benches - Spectator Area (See Section B-B')
12. Running Track (400 linear meters)
13. Refurbished Grandstand (Existing)
14. Existing Playground and Splash Pad
15. Existing Horseshoe Club
16. Existing Washroom and Changeroom
17. Pedestrian Pathway with Rubber Surfacing
18. Turn Around Circle with Drop-off Area
19. Wheel Chair Accessible Path
20. New Concrete Stairs
21. Green Necklace Greenway (Existing)
22. Enhanced Park Entrance
23. Shelter Structure
24. 6-Lane 100m Sprint Track

Visualization & Cross Sections



① View from Jones Ave.

Section at North End of Field



Section A - A'

Section Through Spectator Slope



Play Field

Players' Benches

Community Track

Terraced Seating

Recreation Track

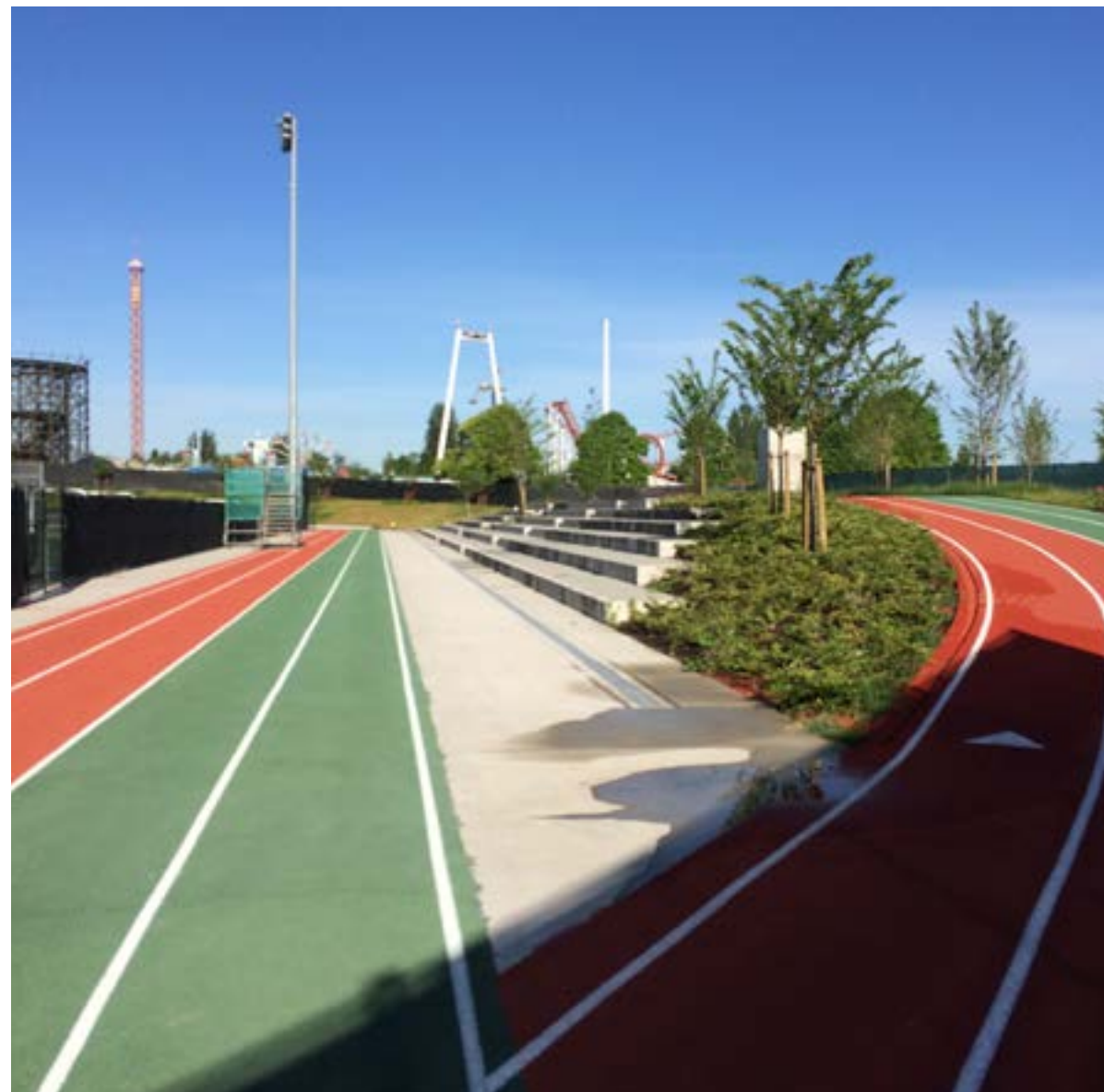
Green Necklace

Section B - B'
Jones Ave.

Precedent Study

Precedent / Material Palette

Recreational Tracks



Mixed Meadow / Grass



Slope Plantings



Historical Reference



Park Shelter



Terraced Slope



Grass Slope



Gathering Spaces



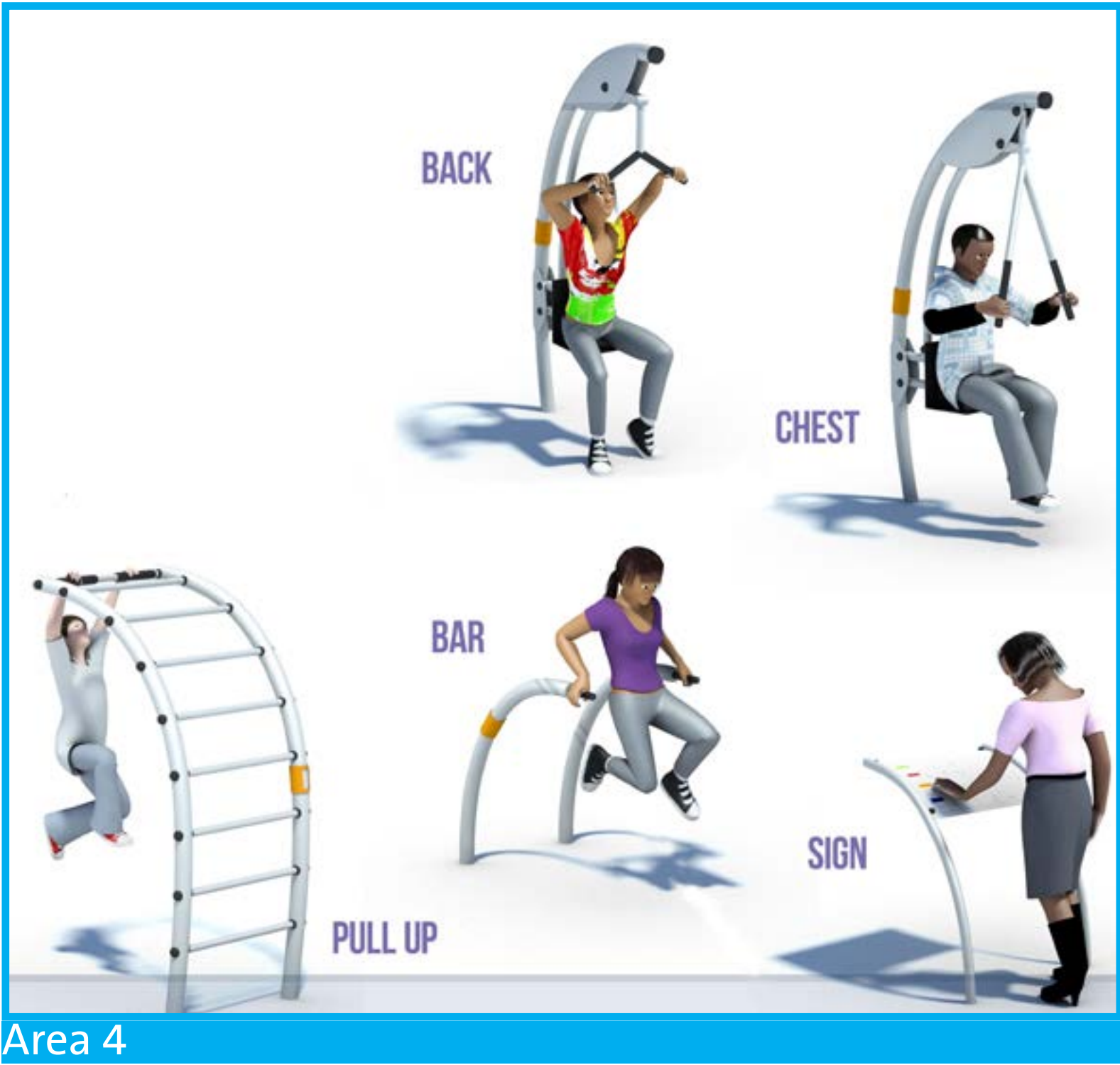
Boulder Retaining Wall



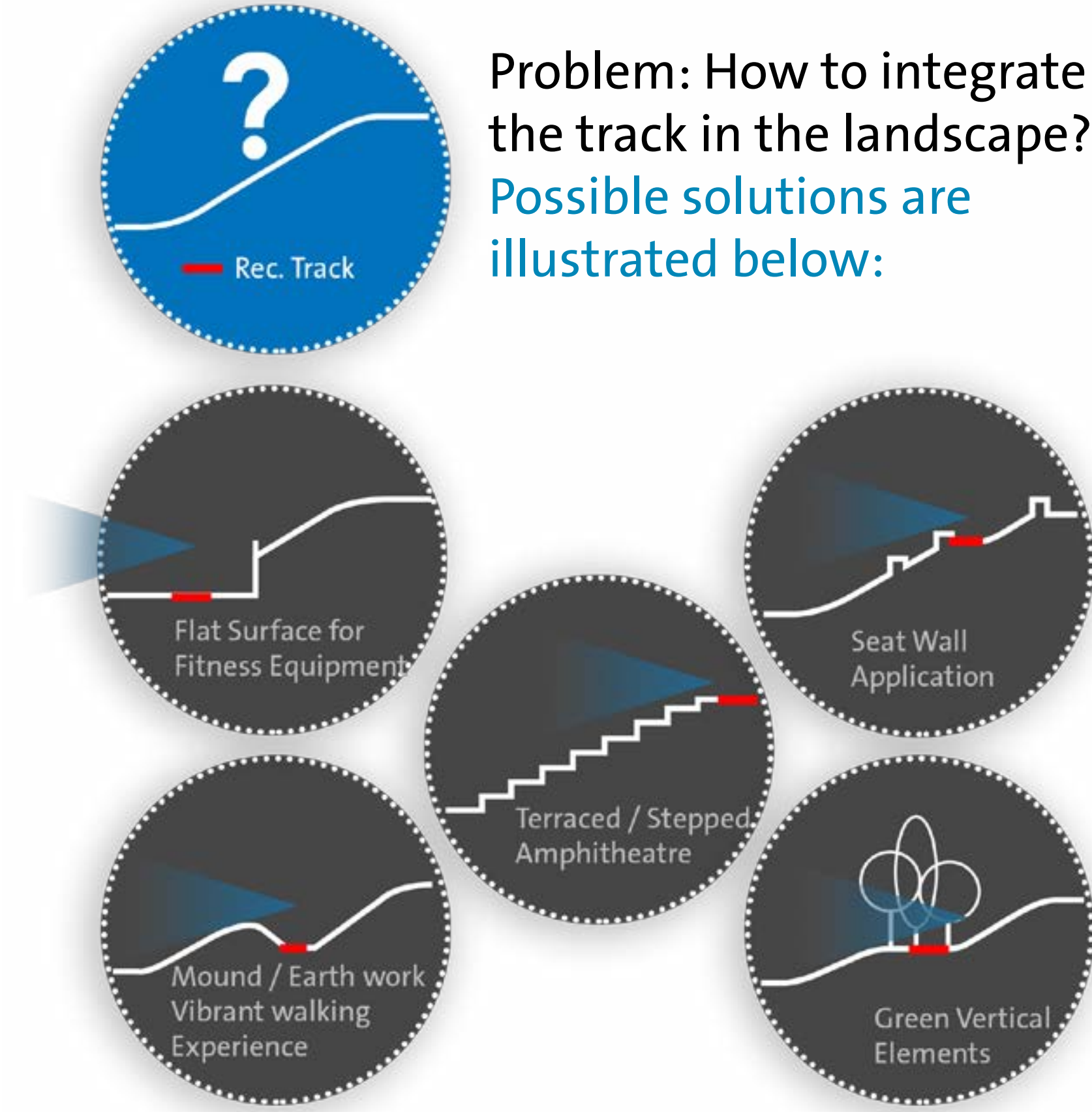
Programming



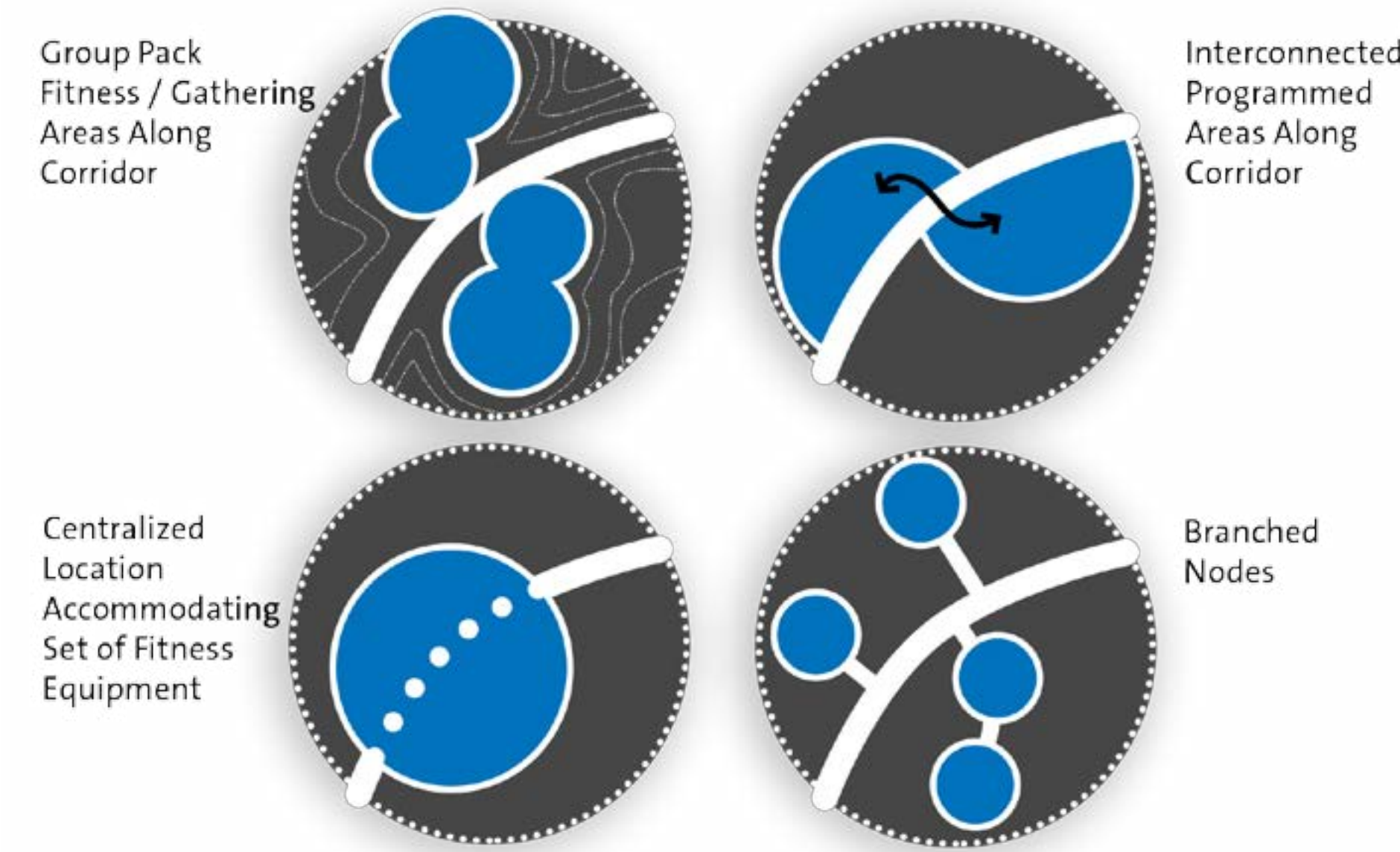
Options for Fitness Stations



Recreational Track Options

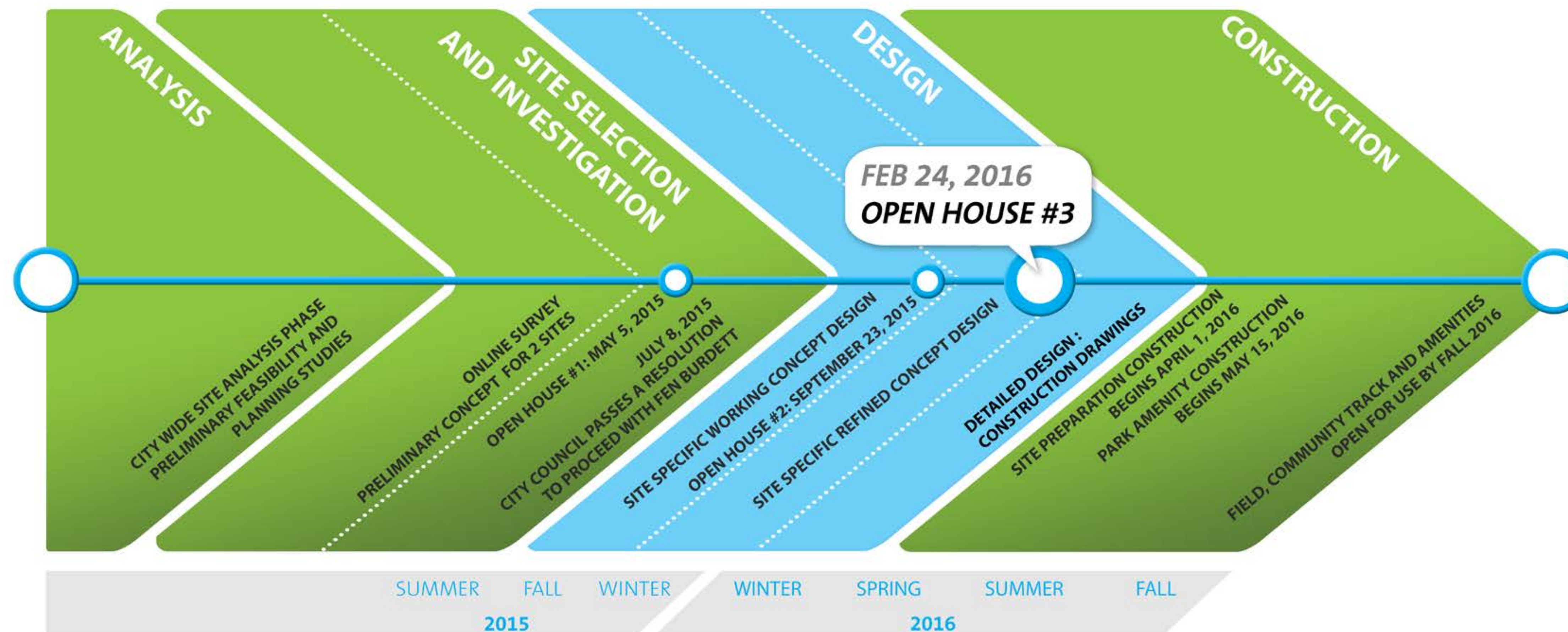


Options to Arrange Fitness Areas Along Recreational Track



Next Steps

- We will review all public comments and feedback
- Design team will develop detailed design informed by all feedback



Thanks for attending our open house, we look forward to your comments!

Watch our website for updates on this exciting project and to fill out your online questionnaire:

www.cnv.org/FenBurdettATF